

Monthly Housing Statistics

January 2018



SINGLE FAMILY HOMES

Median Sales Price	
\$772,000	+5.8%
Closed Sales	
252	+2.0%
Average Sales Price	
\$938,831	+4.4%

CONDOS

Median Sales Price	
\$430,000	+13.2%
Closed Sales	
374	-1.1%
Average Sales Price	
\$490,461	+7.7%

INDEX:

Monthly Indicators	2
Closed Sales	3
Median Sales Price	4
Median Days on Market	5
New Listings	6
Pending Sales	7
Months of Inventory	8
Active Listings	9
Average Sales Price	10
% of Original Listing Price Received	11
Active Continue to Show	12
Housing Supply Overview	13
Pending Sales (by price range)	14-15
Median Days on Market (by price range)	16-17
% of list price received (by price range)	18-19
Inventory of Homes (by price range)	20-21
Months Supply of Inventory (price range)	22-23
Historical Graphs	24-25
Price Graphs	26-27

Monthly Indicators

January 2018

	Single Family Homes					
	Jan-18	Jan-17	%	YTD-18	YTD-17	%
Closed Sales	252	247	2.0%	252	247	2.0%
Median Sales Price	\$772,000	\$730,000	5.8%	\$772,000	\$730,000	5.8%
Median Days on Market	21	21	0.0%	21	21	0.0%
New Listings	426	446	-4.5%	426	446	-4.5%
Pending Sales	404	430	-6.0%	404	430	-6.0%
Months of Inventory	1.9	2.4	-20.8%	--	--	--
Active Listings	1,003	1,035	-3.1%	--	--	--
Average Sales Price	\$938,831	\$899,593	4.4%	\$938,831	\$899,593	4.4%
% of Original Listing Price Received	98.3%	97.5%	0.8%	98.3%	97.5%	0.8%

	Condos					
	Jan-18	Jan-17	%	YTD-18	YTD-17	%
Closed Sales	374	378	-1.1%	374	378	-1.1%
Median Sales Price	\$430,000	\$380,000	13.2%	\$430,000	\$380,000	13.2%
Median Days on Market	19	26	-26.9%	19	26	-26.9%
New Listings	730	641	13.9%	730	641	13.9%
Pending Sales	565	619	-8.7%	565	619	-8.7%
Months of Inventory	2.4	2.4	0.0%	--	--	--
Active Listings	1,699	1,522	11.6%	--	--	--
Average Sales Price	\$490,461	\$455,595	7.7%	\$490,461	\$455,595	7.7%
% of Original Listing Price Received	98.1%	98.0%	0.1%	98.1%	98.0%	0.1%

SOURCE: Honolulu Board of REALTORS®, compiled from MLS data.

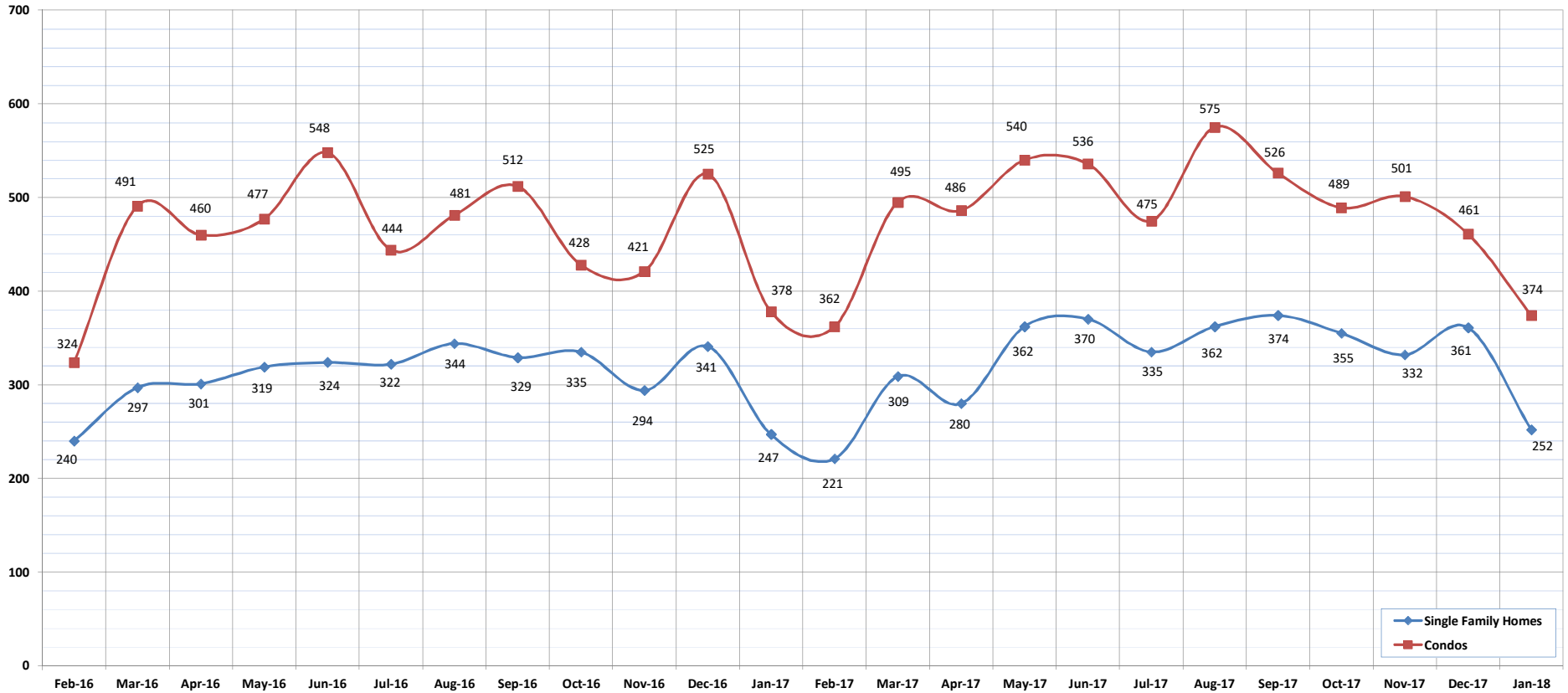


Closed Sales

January-18

OAHU, HAWAII

(A count of all properties that have closed in a given month.)



	Feb-16	Mar-16	Apr-16	May-16	Jun-16	Jul-16	Aug-16	Sep-16	Oct-16	Nov-16	Dec-16	Jan-17	Feb-17	Mar-17	Apr-17	May-17	Jun-17	Jul-17	Aug-17	Sep-17	Oct-17	Nov-17	Dec-17	Jan-18
Closed Sales: Single Family Homes	240	297	301	319	324	322	344	329	335	294	341	247	221	309	280	362	370	335	362	374	355	332	361	252
Closed Sales: Condos	324	491	460	477	548	444	481	512	428	421	525	378	362	495	486	540	536	540	575	526	489	501	461	374
Closed Sales: Total	564	788	761	796	872	766	825	841	763	715	866	625	583	804	766	902	906	906	937	900	844	833	822	626

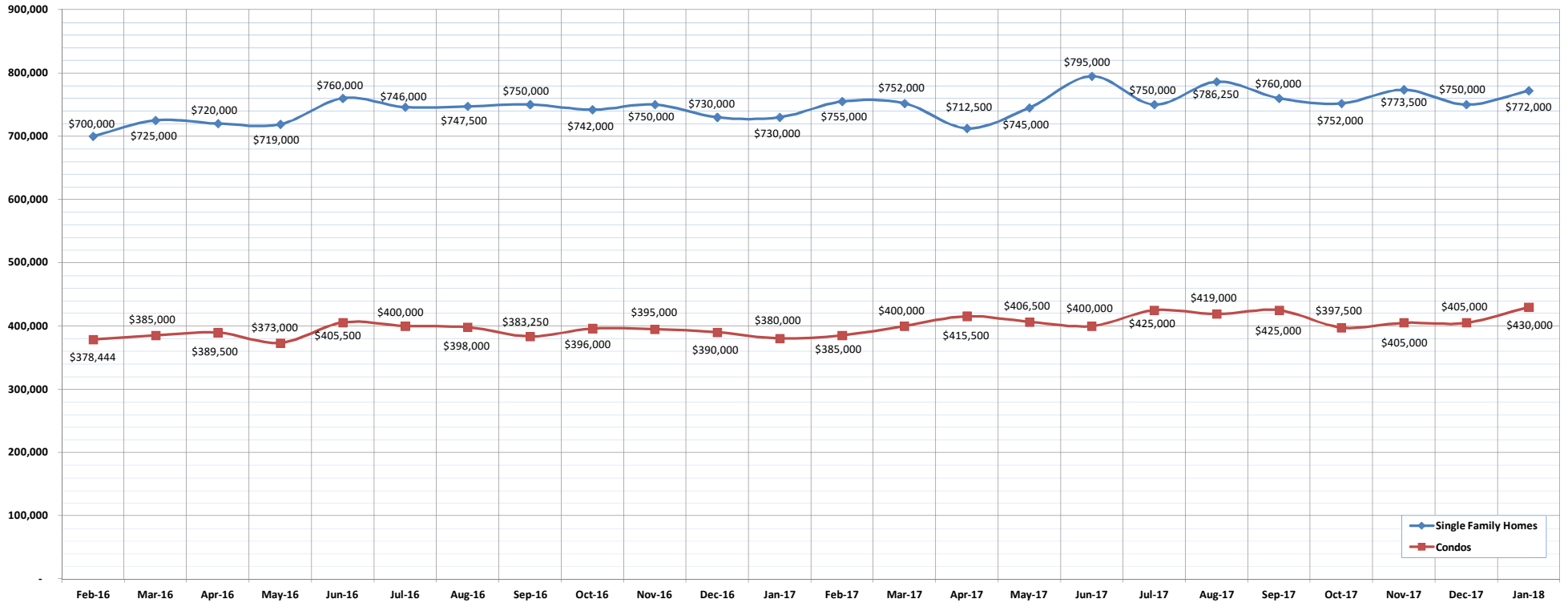
SOURCE: Honolulu Board of REALTORS®, compiled from MLS data.

Median Sales Price

January-18

OAHU, HAWAII

(The median sales price for all closed properties in a given month.)



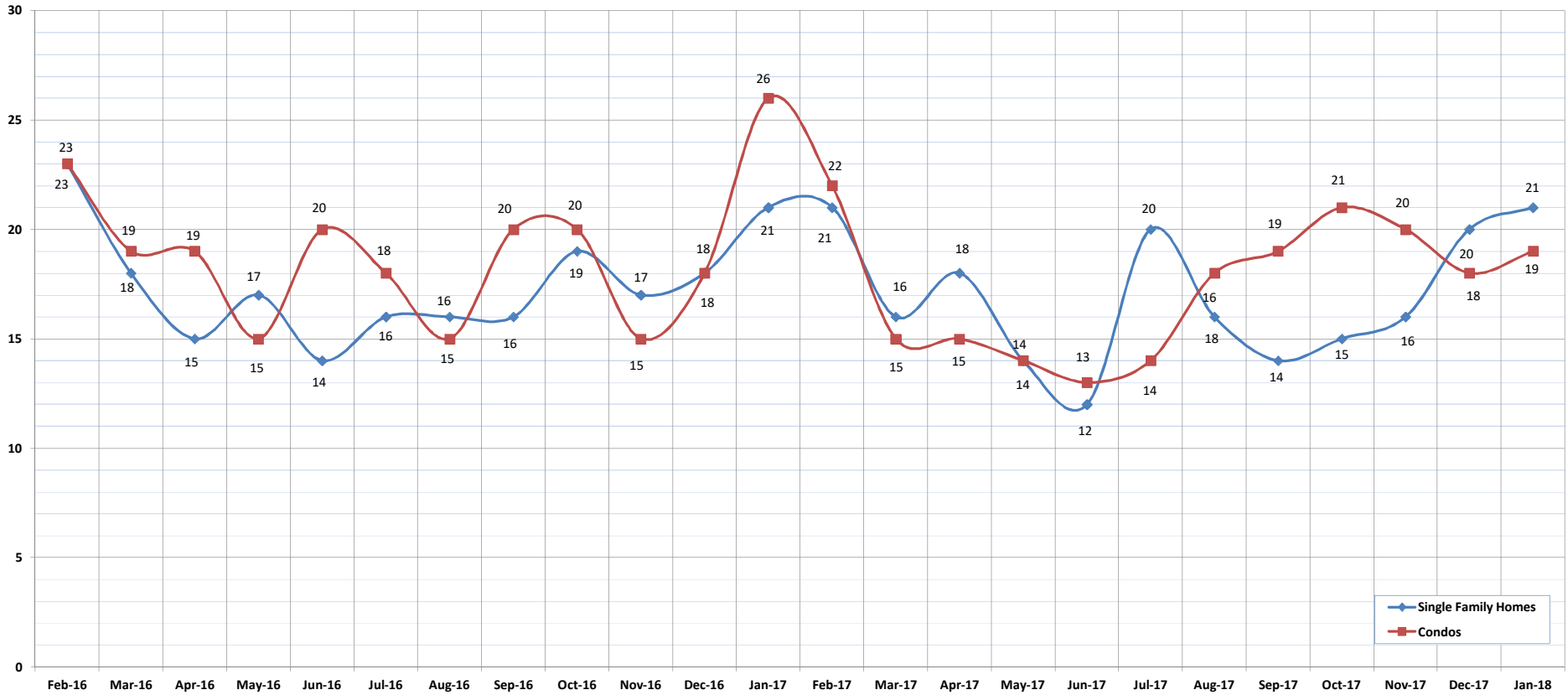
	Feb-16	Mar-16	Apr-16	May-16	Jun-16	Jul-16	Aug-16	Sep-16	Oct-16	Nov-16	Dec-16	Jan-17	Feb-17	Mar-17	Apr-17	May-17	Jun-17	Jul-17	Aug-17	Sep-17	Oct-17	Nov-17	Dec-17	Jan-18
Median Sales Price : SFH	700,000	725,000	720,000	719,000	760,000	746,000	747,500	750,000	742,000	750,000	730,000	730,000	755,000	752,000	712,500	745,000	795,000	750,000	786,250	760,000	752,000	773,500	750,000	772,000
Median Sales Price: Condos	378,444	385,000	389,500	373,000	405,500	400,000	398,000	383,250	396,000	395,000	390,000	380,000	385,000	400,000	415,500	406,500	400,000	425,000	419,000	425,000	397,500	405,000	405,000	430,000

Median Days on Market

January-18

OAHU, HAWAII

(The median number of days between when a property is first listed and when an offer is accepted.)



	Feb-16	Mar-16	Apr-16	May-16	Jun-16	Jul-16	Aug-16	Sep-16	Oct-16	Nov-16	Dec-16	Jan-17	Feb-17	Mar-17	Apr-17	May-17	Jun-17	Jul-17	Aug-17	Sep-17	Oct-17	Nov-17	Dec-17	Jan-18
Median Days on Market: SFH	23	18	15	17	14	16	16	16	19	17	18	21	21	16	18	14	12	20	16	14	15	16	20	21
Median Days on Market: Condos	23	19	19	15	20	18	15	20	20	15	18	26	22	15	15	14	13	14	18	19	21	20	18	19

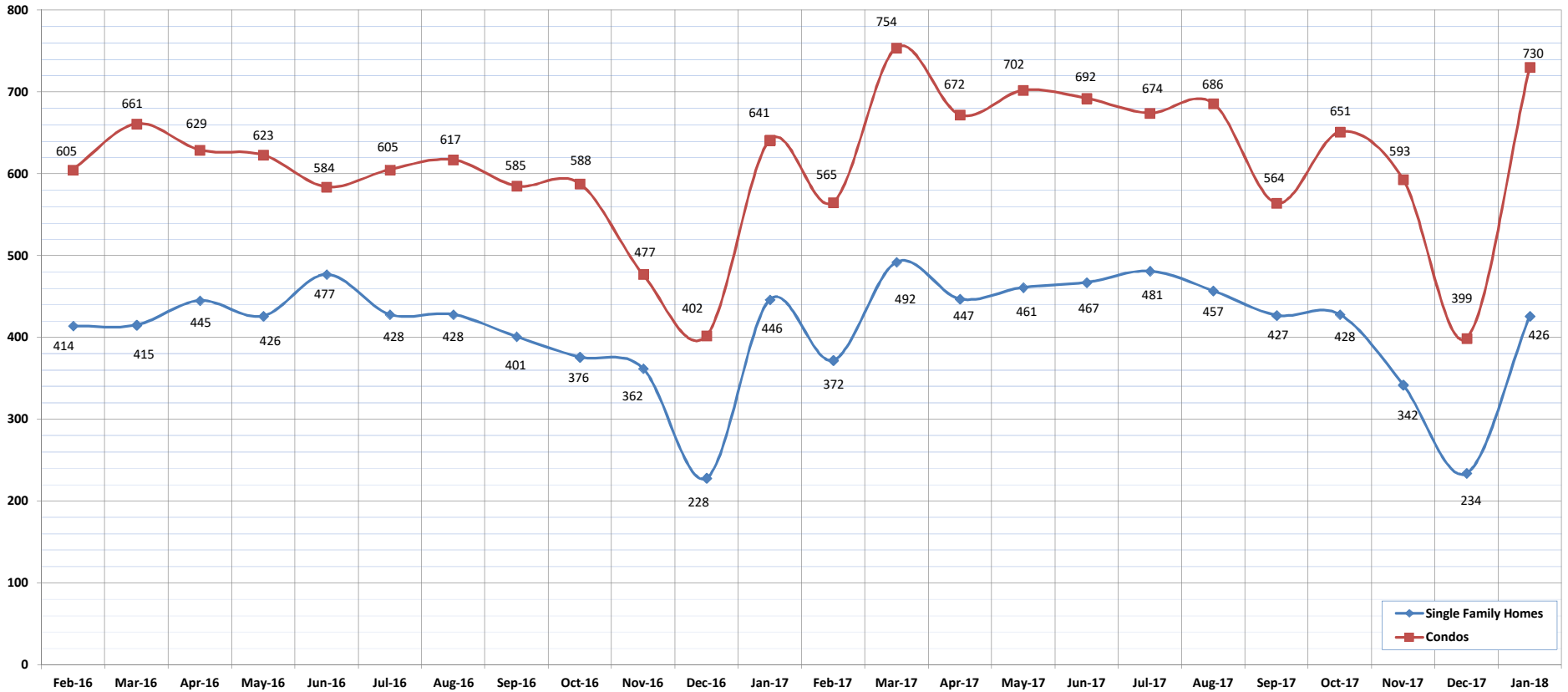
SOURCE: Honolulu Board of REALTORS®, compiled from MLS data.



New Listings

January-18
OAHU, HAWAII

(A count of the properties that have been newly listed on the market in a given month.)



	Feb-16	Mar-16	Apr-16	May-16	Jun-16	Jul-16	Aug-16	Sep-16	Oct-16	Nov-16	Dec-16	Jan-17	Feb-17	Mar-17	Apr-17	May-17	Jun-17	Jul-17	Aug-17	Sep-17	Oct-17	Nov-17	Dec-17	Jan-18
New Listings: Single Family Homes	414	415	445	426	477	428	428	401	376	362	228	446	372	492	447	461	467	481	457	427	428	342	234	426
New Listings: Condos	605	661	629	623	584	605	617	585	588	477	402	641	565	754	672	702	692	674	686	564	651	593	399	730
New Listings: Total	1019	1076	1074	1049	1061	1033	1045	986	964	839	630	1087	937	1246	1119	1163	1159	1155	1143	991	1079	935	633	1156

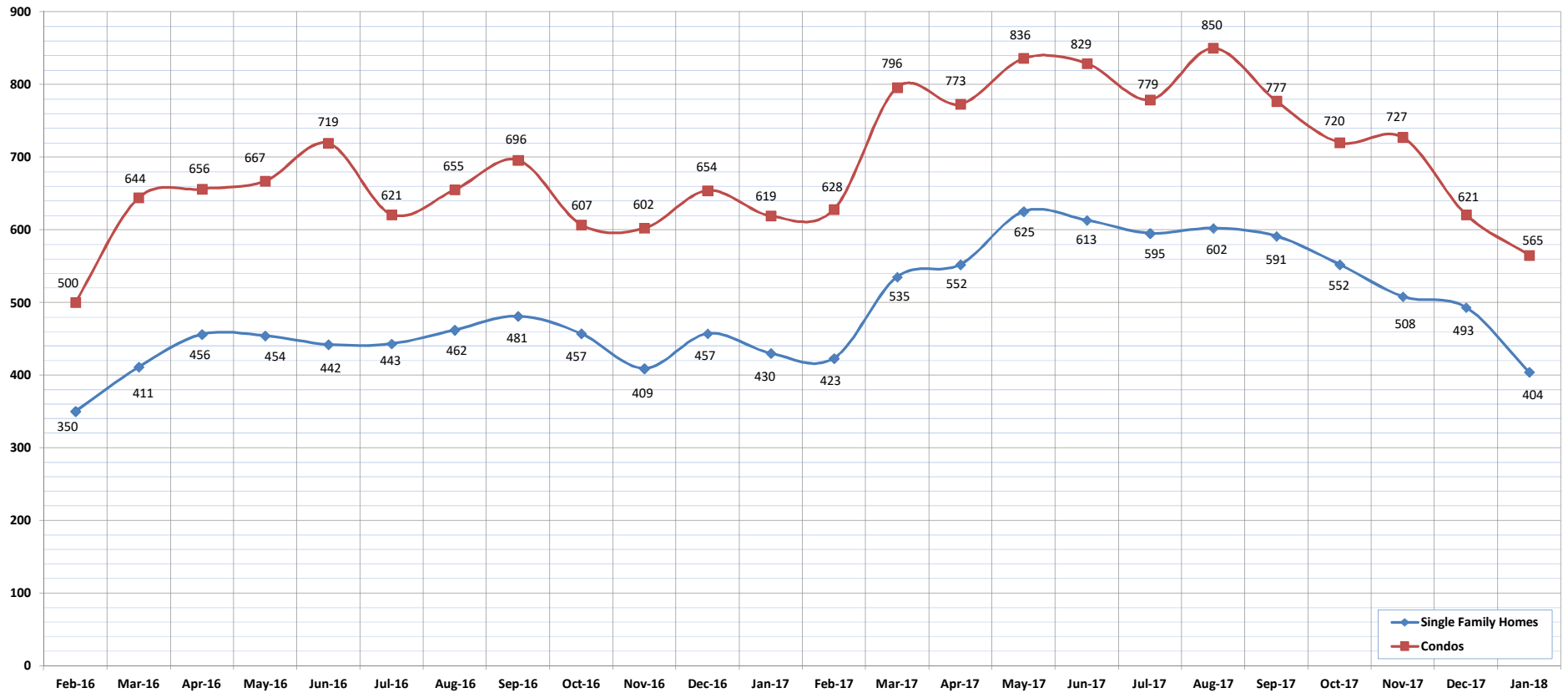
SOURCE: Honolulu Board of REALTORS®, compiled from MLS data.

Pending Sales

January-18

OAHU, HAWAII

(A count of the properties that have offers accepted on them in a given month.)



	Feb-16	Mar-16	Apr-16	May-16	Jun-16	Jul-16	Aug-16	Sep-16	Oct-16	Nov-16	Dec-16	Jan-17	Feb-17	Mar-17	Apr-17	May-17	Jun-17	Jul-17	Aug-17	Sep-17	Oct-17	Nov-17	Dec-17	Jan-18
Pending Sales: Single Family Homes	350	411	456	454	442	443	462	481	457	409	457	430	423	535	552	625	613	595	602	591	552	508	493	404
Pending Sales: Condos	500	644	656	667	719	621	655	696	607	602	654	619	628	796	773	836	829	779	850	777	720	727	621	565
Pending Sales: Total	850	1055	1112	1121	1161	1064	1117	1177	1064	1011	1111	1049	1051	1331	1325	1461	1442	1374	1452	1368	1272	1235	1114	969

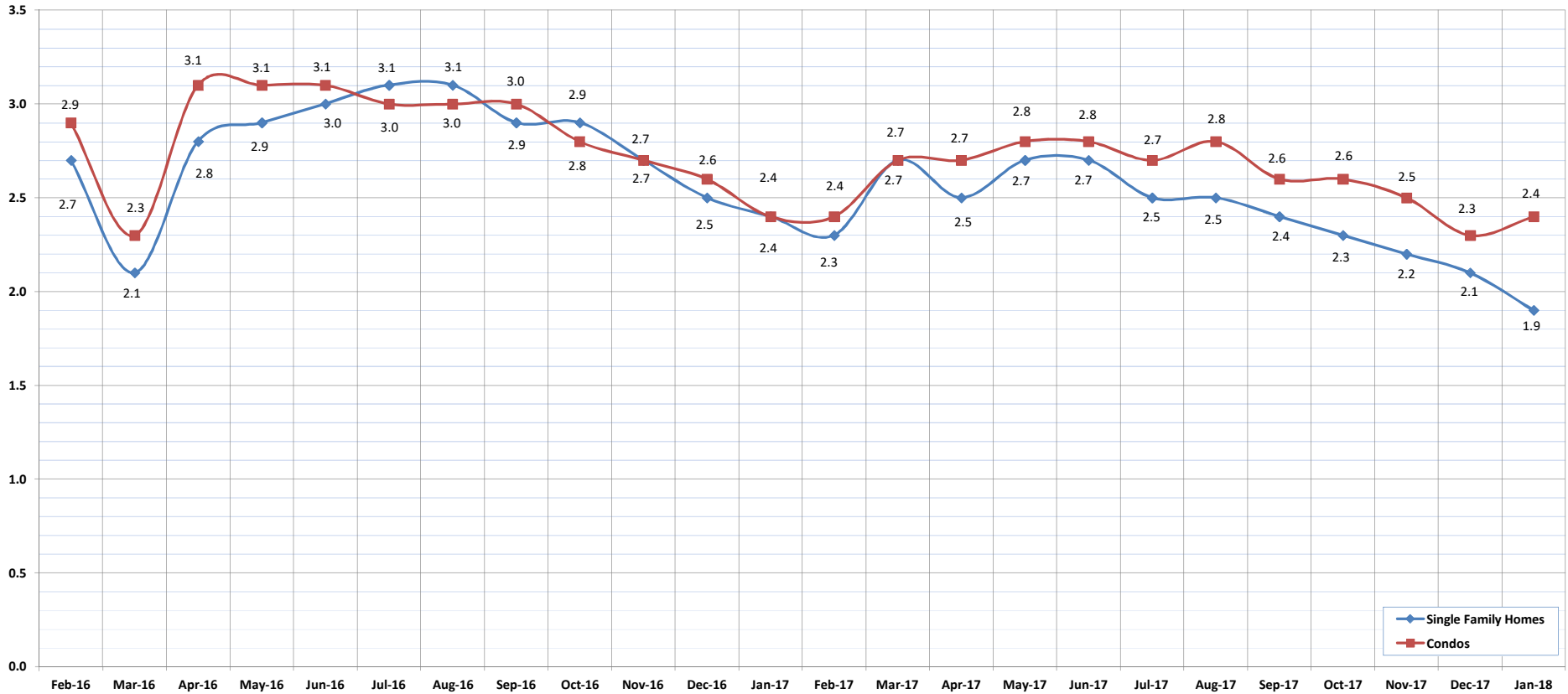
SOURCE: Honolulu Board of REALTORS®, compiled from MLS data.

Months of Inventory

January-18

OAHU, HAWAII

(Compares the number of active listings available to the average monthly pending sales.)



	Feb-16	Mar-16	Apr-16	May-16	Jun-16	Jul-16	Aug-16	Sep-16	Oct-16	Nov-16	Dec-16	Jan-17	Feb-17	Mar-17	Apr-17	May-17	Jun-17	Jul-17	Aug-17	Sep-17	Oct-17	Nov-17	Dec-17	Jan-18
Month of Inventory : SFH	2.7	2.1	2.8	2.9	3.0	3.1	3.1	2.9	2.9	2.7	2.5	2.4	2.3	2.7	2.5	2.7	2.7	2.5	2.5	2.4	2.3	2.2	2.1	1.9
Months of Inventory: Condos	2.9	2.3	3.1	3.1	3.1	3.0	3.0	3.0	2.8	2.7	2.6	2.4	2.4	2.7	2.7	2.8	2.8	2.7	2.8	2.6	2.6	2.5	2.3	2.4

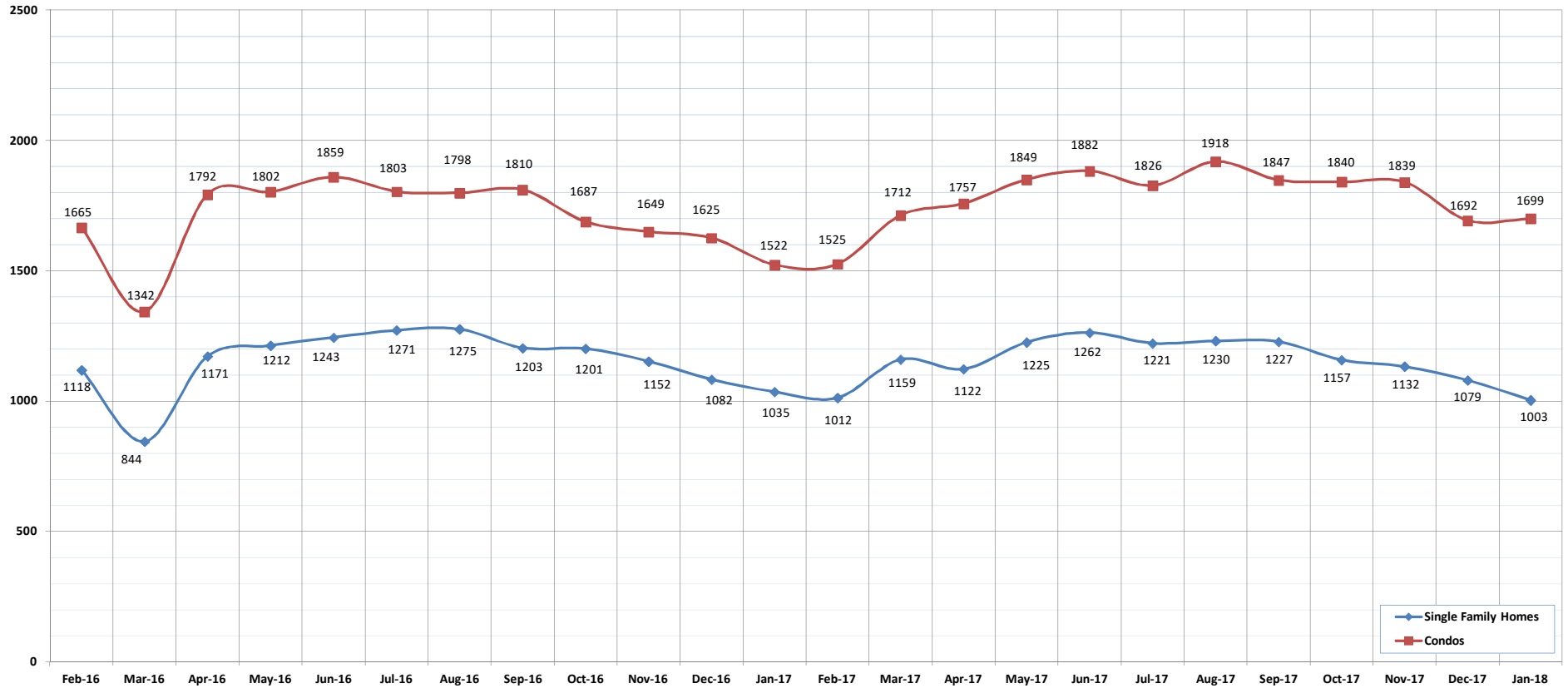
SOURCE: Honolulu Board of REALTORS®, compiled from MLS data.



Active Listings

January-18
OAHU, HAWAII

(The number of properties available for purchase during a given month.)



	Feb-16	Mar-16	Apr-16	May-16	Jun-16	Jul-16	Aug-16	Sep-16	Oct-16	Nov-16	Dec-16	Jan-17	Feb-17	Mar-17	Apr-17	May-17	Jun-17	Jul-17	Aug-17	Sep-17	Oct-17	Nov-17	Dec-17	Jan-18
Active Listings: Single Family Homes	1118	844	1171	1212	1243	1271	1275	1203	1201	1152	1082	1035	1012	1159	1122	1225	1262	1221	1230	1227	1157	1132	1079	1003
Active Listings: Condos	1665	1342	1792	1802	1859	1803	1798	1810	1687	1649	1625	1522	1525	1712	1757	1849	1882	1826	1918	1847	1840	1839	1692	1699
Active Listings: Total	2783	2186	2963	3014	3102	3074	3073	3013	2888	2801	2707	2557	2537	2871	2879	3074	3144	3047	3148	3074	2997	2971	2771	2702

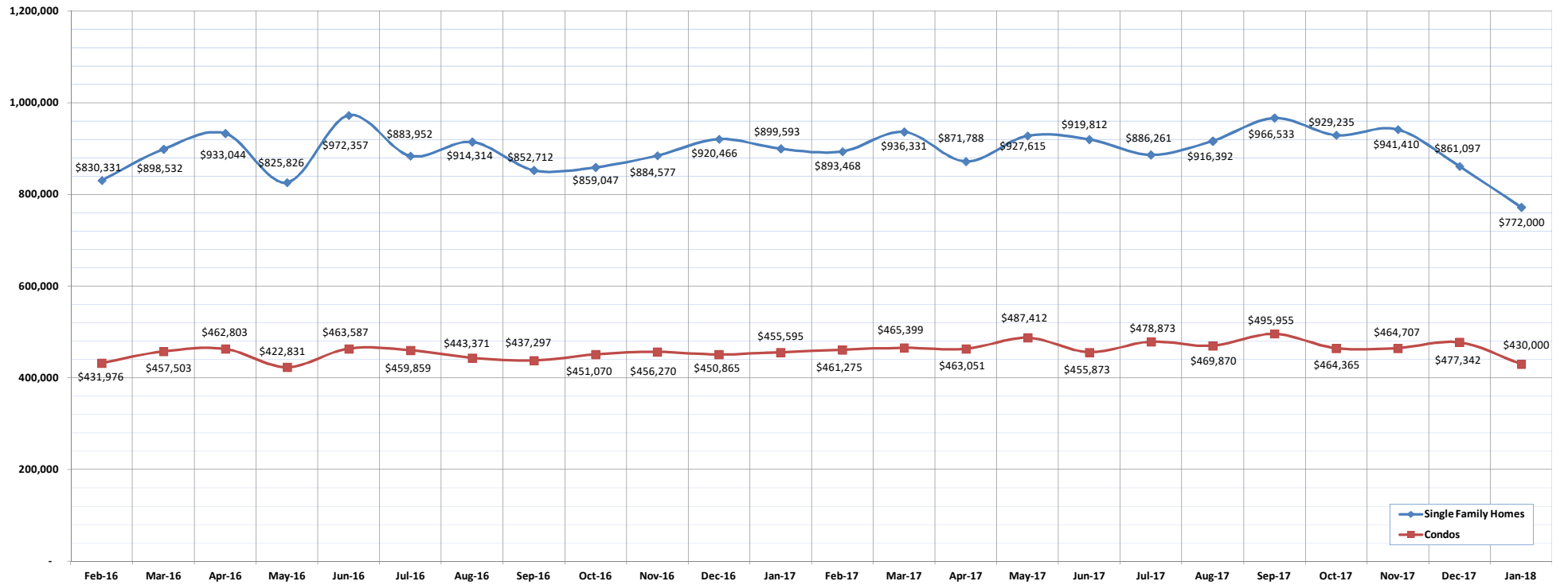
SOURCE: Honolulu Board of REALTORS®, compiled from MLS data.

Average Sales Price

January-18

OAHU, HAWAII

(The average sales price for all closed sales in a given month.)

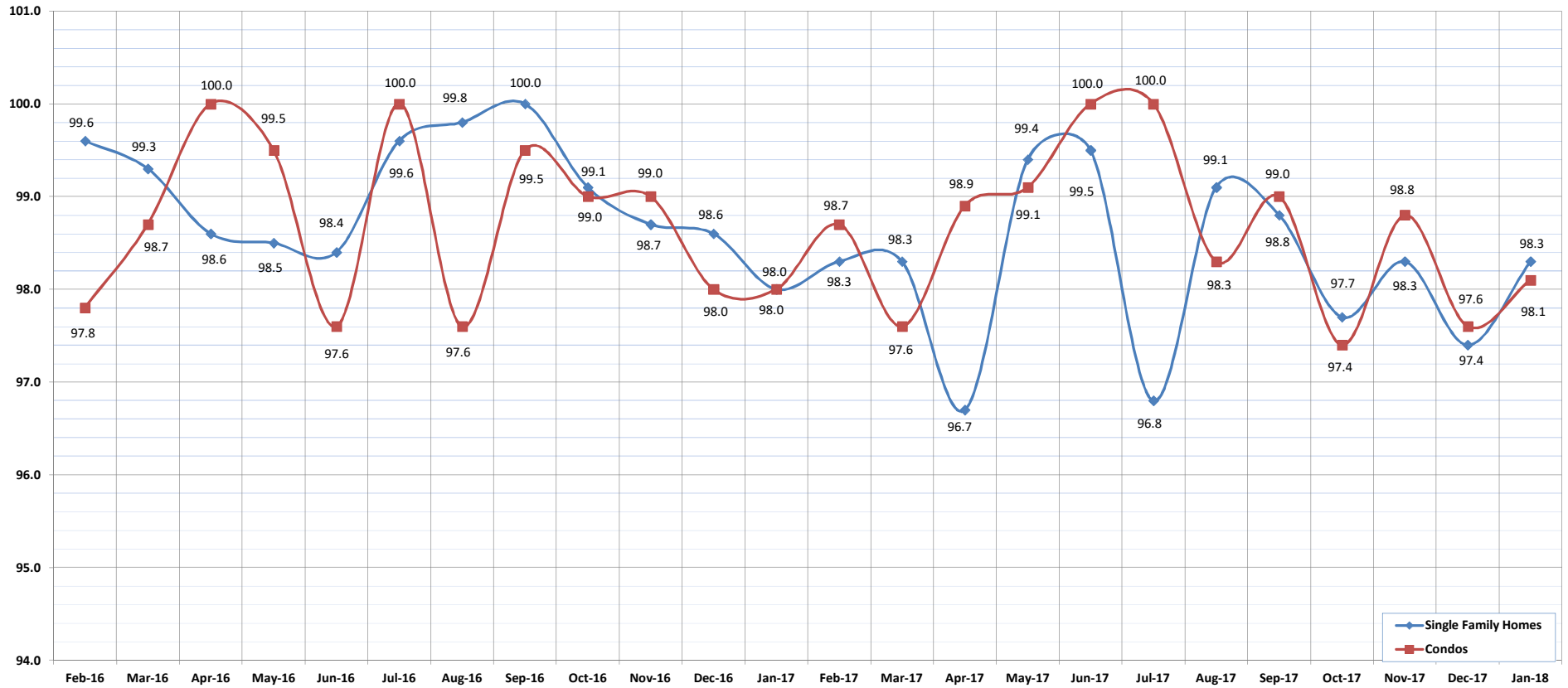


	Feb-16	Mar-16	Apr-16	May-16	Jun-16	Jul-16	Aug-16	Sep-16	Oct-16	Nov-16	Dec-16	Jan-17	Feb-17	Mar-17	Apr-17	May-17	Jun-17	Jul-17	Aug-17	Sep-17	Oct-17	Nov-17	Dec-17	Jan-18
Average Sales Price: SFH	830,331	898,532	933,044	825,826	972,357	883,952	914,314	852,712	859,047	884,577	920,466	899,593	893,468	936,331	871,788	927,615	919,812	886,261	916,392	966,533	929,235	941,410	861,097	772,000
Average Sales Price: Condos	431,976	457,503	462,803	422,831	463,587	459,859	443,371	437,297	451,070	456,270	450,865	455,595	461,275	465,399	463,051	487,412	455,873	478,873	469,870	495,955	464,365	464,707	477,342	430,000

Percent of Original List Price Received

January-18
OAHU, HAWAII

(The percentage found when dividing a property's sales price by the original list price.)



	Feb-16	Mar-16	Apr-16	May-16	Jun-16	Jul-16	Aug-16	Sep-16	Oct-16	Nov-16	Dec-16	Jan-17	Feb-17	Mar-17	Apr-17	May-17	Jun-17	Jul-17	Aug-17	Sep-17	Oct-17	Nov-17	Dec-17	Jan-18
Percent of Original List Price: SFH	99.6	99.3	98.6	98.5	98.4	99.6	99.8	100.0	99.1	98.7	98.6	98.0	98.3	98.3	96.7	99.4	99.5	96.8	99.1	98.8	97.7	98.3	97.4	98.3
Percent of Original List Price: Condos	97.8	98.7	100.0	99.5	97.6	100.0	97.6	99.5	99.0	99.0	98.0	98.0	98.7	97.6	98.9	99.1	100.0	100.0	98.3	99.0	97.4	98.8	97.6	98.1

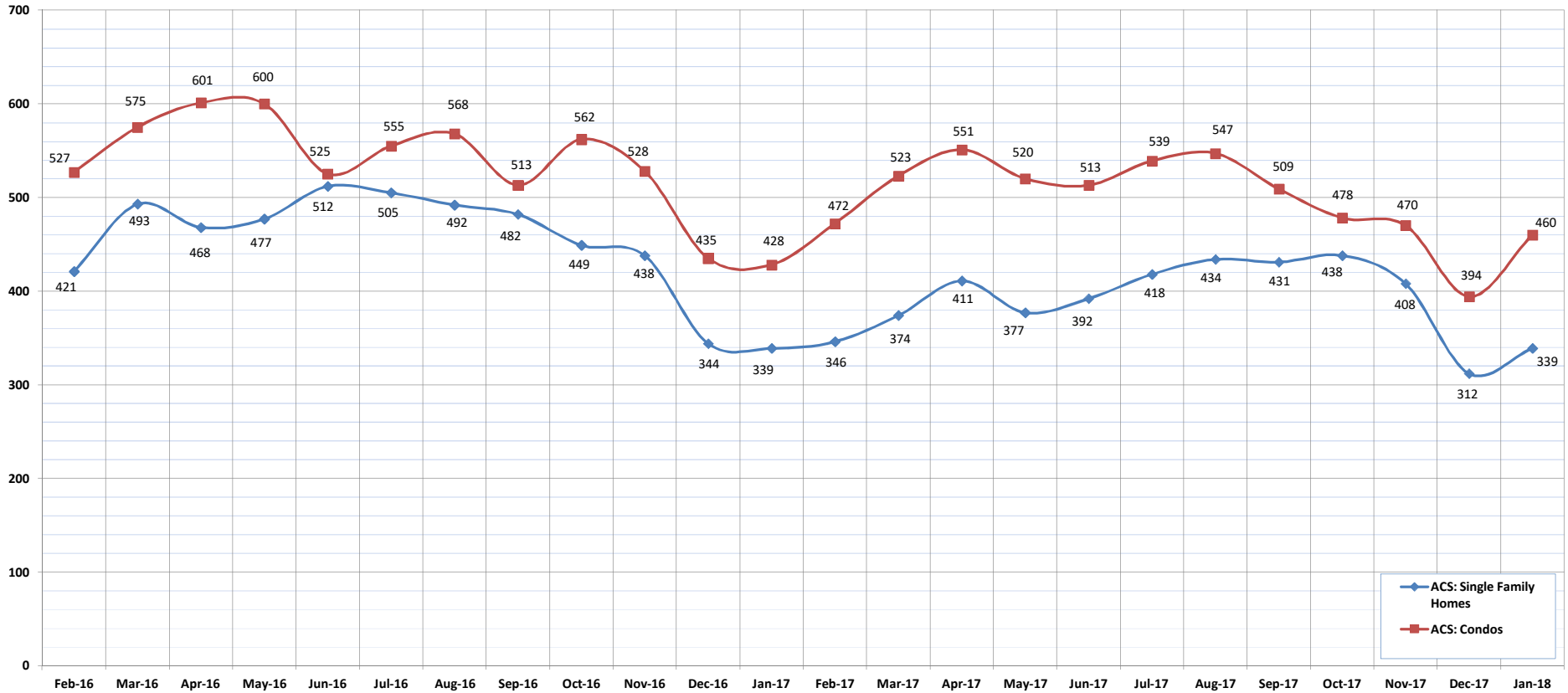
SOURCE: Honolulu Board of REALTORS®, compiled from MLS data.

Active Continue to Show

January-18

OAHU, HAWAII

(A count of the properties that are in ACS during the current month.)



	Feb-16	Mar-16	Apr-16	May-16	Jun-16	Jul-16	Aug-16	Sep-16	Oct-16	Nov-16	Dec-16	Jan-17	Feb-17	Mar-17	Apr-17	May-17	Jun-17	Jul-17	Aug-17	Sep-17	Oct-17	Nov-17	Dec-17	Jan-18
ACS: Single Family Homes	421	493	468	477	512	505	492	482	449	438	344	339	346	374	411	377	392	418	434	431	438	408	312	339
ACS: Condos	527	575	601	600	525	555	568	513	562	528	435	428	472	523	551	520	513	539	547	509	478	470	394	460

SOURCE: Honolulu Board of REALTORS®, compiled from MLS data.

Housing Supply Overview

January 2018

Single Family Homes	Pending Sales			Days on Market			Percentage of Original Price Received			Inventory of Homes for Sale			Months Supply of Inventory		
	Jan-18	Jan-17	%	Jan-18	Jan-17	%	Jan-18	Jan-17	%	Jan-18	Jan-17	%	Jan-18	Jan-17	%
\$350,000 and Below	93	117	-20.5%	36	32	12.5%	96.1%	96.2%	-0.1%	14	17	-17.6%	1.5	1.6	-6.3%
\$350,001 - \$475,000	197	237	-16.9%	28	20	40.0%	98.4%	97.4%	1.0%	45	40	12.5%	2.6	1.8	44.4%
\$475,001 - \$550,000	273	320	-14.7%	14	16	-12.5%	99.2%	98.8%	0.4%	43	44	-2.3%	1.8	1.5	20.0%
\$550,001 - \$650,000	675	681	-0.9%	12	13	-7.7%	99.6%	100.0%	-0.4%	91	102	-10.8%	1.6	1.8	-11.1%
\$650,001 - \$800,000	1127	1020	10.5%	16	17	-5.9%	98.7%	98.8%	-0.1%	180	204	-11.8%	2.0	2.6	-23.1%
\$800,001 - \$1.1M	969	864	12.2%	17	18	-5.6%	98.9%	98.0%	0.9%	210	189	11.1%	2.7	2.8	-3.6%
\$1.1M - \$1.9M	572	498	14.9%	31	31	0.0%	96.3%	95.9%	0.4%	201	210	-4.3%	4.4	5.3	-17.0%
\$1.9M and Above	184	173	6.4%	60	78	-23.1%	92.4%	91.7%	0.8%	219	229	-4.4%	14.3	16.2	-11.7%
All Single Family Homes	4090	3910	4.6%	17	18	-5.6%	98.2%	99.1%	-0.9%	1003	1035	-3.1%	3.0	3.3	-9.1%

Condos	Pending Sales			Days on Market			Percentage of Original Price Received			Inventory of Homes for Sale			Months Supply of Inventory		
	Jan-18	Jan-17	%	Jan-18	Jan-17	%	Jan-18	Jan-17	%	Jan-18	Jan-17	%	Jan-18	Jan-17	%
\$150,000 and below	303	387	-21.7%	42	43	-2.3%	93.9%	90.7%	3.5%	125	112	11.6%	4.3	3.4	26.5%
\$150,001 - \$200,000	298	344	-13.4%	23	29	-20.7%	96.1%	96.3%	-0.2%	75	77	-2.6%	2.7	2.8	-3.6%
\$200,001 - \$250,000	437	416	5.0%	20	27	-25.9%	96.8%	96.9%	-0.1%	100	109	-8.3%	2.8	3.2	-12.5%
\$250,001 - \$300,000	501	566	-11.5%	21	19	10.5%	97.7%	98.4%	-0.7%	111	104	6.7%	2.5	2.0	25.0%
\$300,001 - \$375,000	1091	1060	2.9%	13	14	-7.1%	98.6%	99.3%	-0.7%	208	217	-4.1%	2.3	2.5	-8.0%
\$375,001 - \$475,000	1244	1163	7.0%	13	14	-7.1%	98.5%	98.7%	-0.2%	273	207	31.9%	2.7	2.2	22.7%
\$475,001 - \$700,000	1517	1287	17.9%	16	18	-11.1%	98.7%	98.7%	0.0%	364	300	21.3%	3.0	3.2	-6.3%
\$700,001 and above	693	592	17.1%	44	51	-13.7%	96.6%	94.4%	2.3%	443	396	11.9%	8.2	8.9	-7.9%
All Condos	6084	5815	4.6%	17	20	-15.0%	98.6%	98.8%	-0.2%	1699	1522	11.6%	3.4	3.3	3.0%

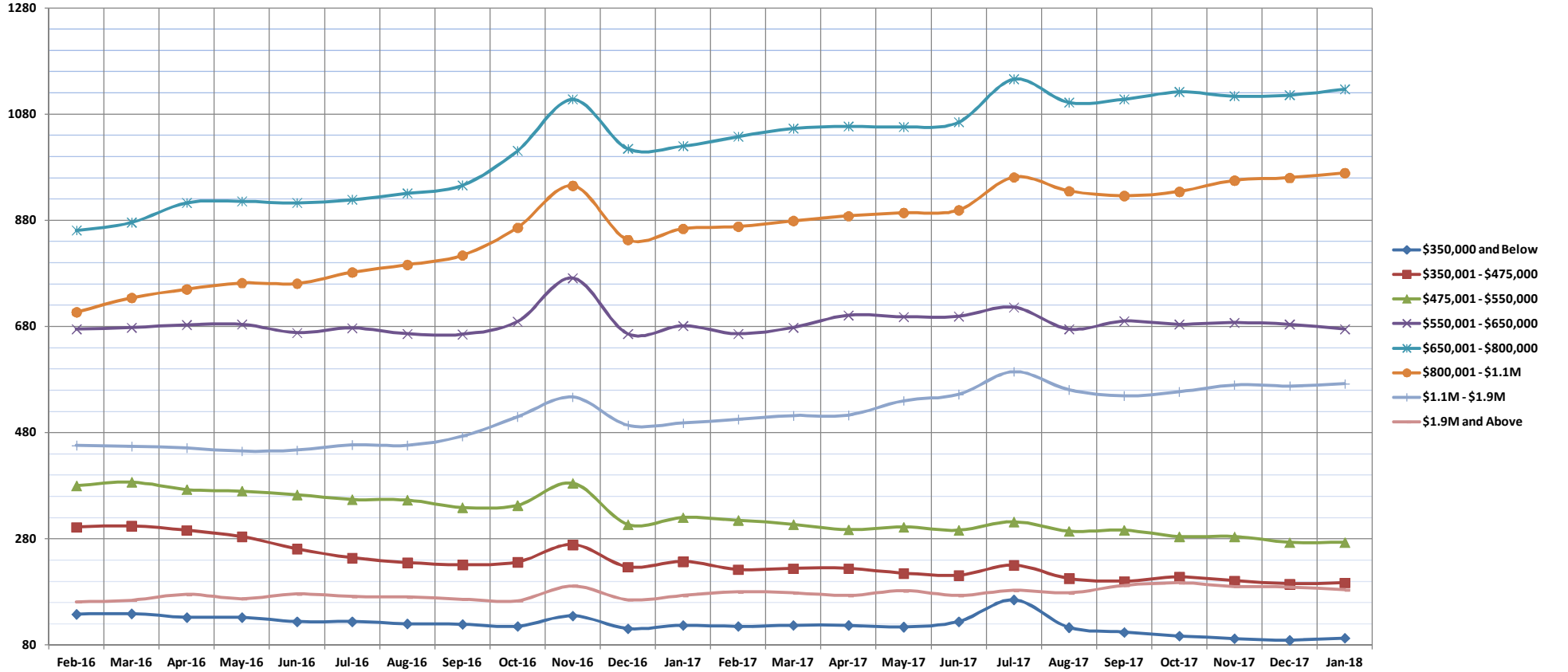
SOURCE: Honolulu Board of REALTORS® , compiled from MLS data.

Pending Sales

Jan-18

Single Family Homes: Monthly, by Price Range

(A count of properties that have offers accepted on them in a given month. Based on a 12 month rolling total.)



	Feb-16	Mar-16	Apr-16	May-16	Jun-16	Jul-16	Aug-16	Sep-16	Oct-16	Nov-16	Dec-16	Jan-17	Feb-17	Mar-17	Apr-17	May-17	Jun-17	Jul-17	Aug-17	Sep-17	Oct-17	Nov-17	Dec-17	Jan-18
\$350,000 and Below	138	139	132	132	124	124	120	119	115	135	111	117	115	117	117	114	124	165	113	104	97	92	89	93
\$350,001 - \$475,000	302	304	296	284	261	244	235	231	236	269	227	237	222	224	224	215	211	230	205	200	208	201	195	197
\$475,001 - \$550,000	380	387	373	370	363	354	353	339	343	385	307	320	315	307	297	302	296	312	294	296	284	284	273	273
\$550,001 - \$650,000	675	678	683	684	668	677	666	665	689	771	666	681	666	678	701	698	699	716	675	690	684	687	684	675
\$650,001 - \$800,000	861	876	913	916	913	919	931	946	1011	1108	1015	1020	1038	1053	1057	1056	1065	1146	1102	1108	1122	1114	1116	1127
\$800,001 - \$1.1M	707	734	750	762	761	782	796	814	866	945	843	864	868	879	888	894	899	961	935	926	934	955	960	969
\$1.1M - \$1.9M	456	454	451	445	447	457	456	473	510	547	494	498	505	512	513	540	552	595	561	549	557	570	568	572
\$1.9M and Above	161	164	175	167	176	171	170	166	163	191	165	173	180	178	173	182	173	183	178	192	197	190	189	184
All Single Family Homes	3680	3736	3773	3760	3713	3728	3727	3753	3933	4351	3828	3910	3909	3948	3970	4001	4019	4308	4063	4065	4083	4093	4074	4090

SOURCE: Honolulu Board of REALTORS®, compiled from MLS data.

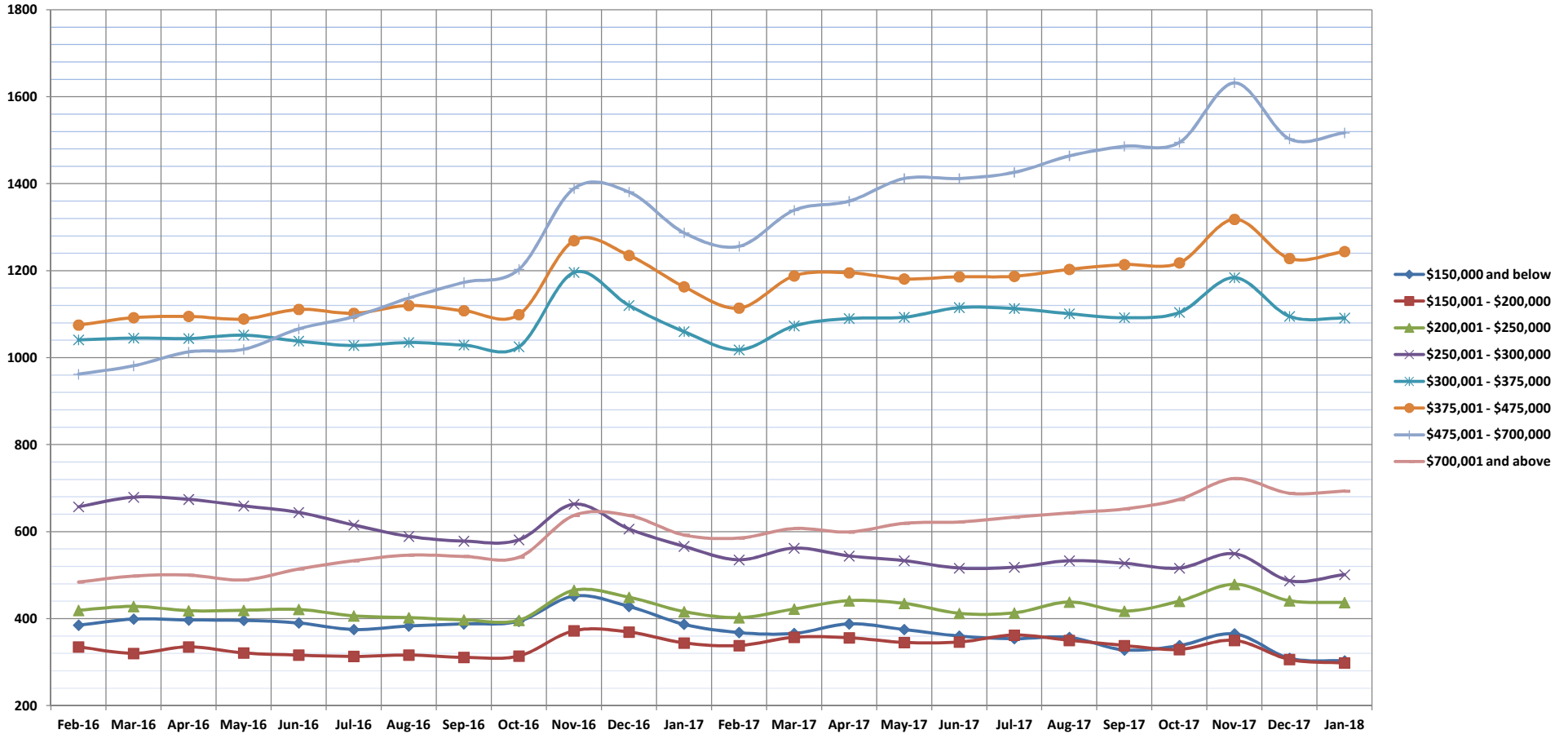


Pending Sales

Jan-18

Condos: Monthly, by Price Range

(A count of properties that have offers accepted on them in a given month. Based on a 12 month rolling total.)



	Feb-16	Mar-16	Apr-16	May-16	Jun-16	Jul-16	Aug-16	Sep-16	Oct-16	Nov-16	Dec-16	Jan-17	Feb-17	Mar-17	Apr-17	May-17	Jun-17	Jul-17	Aug-17	Sep-17	Oct-17	Nov-17	Dec-17	Jan-18
\$150,000 and below	385	399	397	396	390	375	383	388	394	452	428	387	368	366	388	375	360	354	357	328	338	365	309	303
\$150,001 - \$200,000	335	320	335	321	316	313	316	311	314	372	369	344	338	357	356	345	346	362	350	338	329	350	306	298
\$200,001 - \$250,000	419	428	418	419	421	406	402	397	396	465	449	416	402	422	441	435	412	413	438	417	440	479	441	437
\$250,001 - \$300,000	657	679	674	659	644	615	589	578	581	663	606	566	535	562	544	533	516	518	533	527	516	549	487	501
\$300,001 - \$375,000	1041	1045	1044	1052	1038	1028	1035	1029	1025	1196	1120	1060	1018	1073	1090	1093	1115	1113	1101	1092	1104	1184	1095	1091
\$375,001 - \$475,000	1075	1092	1095	1089	1111	1102	1120	1108	1099	1269	1235	1163	1114	1188	1195	1181	1186	1187	1203	1214	1218	1318	1228	1244
\$475,001 - \$700,000	962	981	1013	1019	1066	1094	1137	1173	1203	1389	1381	1287	1256	1339	1360	1412	1412	1426	1464	1486	1495	1632	1503	1517
\$700,001 and above	484	498	500	489	514	533	546	543	541	637	637	592	585	607	599	619	622	633	643	652	674	722	688	693
All Condos	5358	5442	5476	5444	5500	5466	5528	5527	5553	6443	6225	5815	5616	5914	5973	5993	5969	6006	6089	6054	6114	6599	6057	6084

SOURCE: Honolulu Board of REALTORS®, compiled from MLS data.

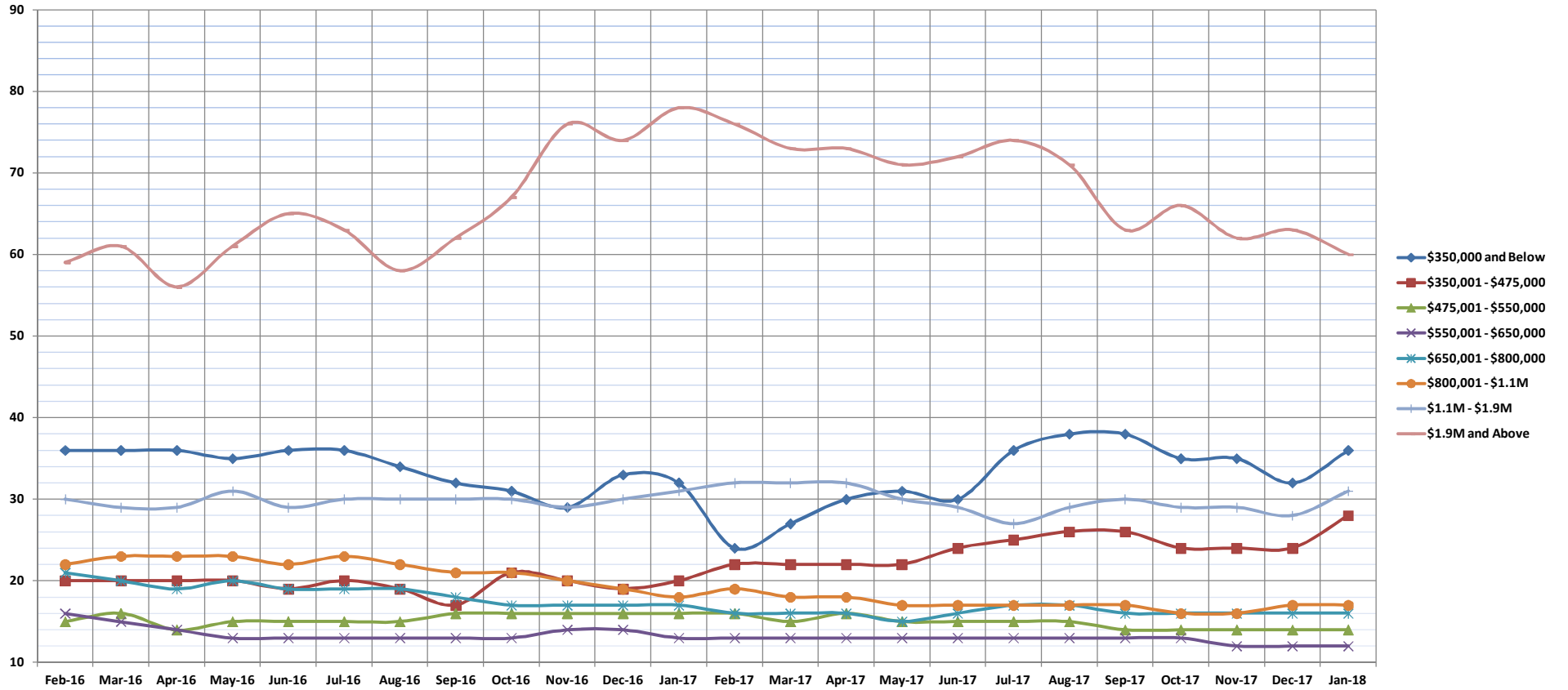


Days on Market Until Sale

Jan-18

Single Family Homes: Monthly, by Price Range

(The median number of days between when a property is first listed and when an offer is accepted. Based on a 12 month rolling median.)



	Feb-16	Mar-16	Apr-16	May-16	Jun-16	Jul-16	Aug-16	Sep-16	Oct-16	Nov-16	Dec-16	Jan-17	Feb-17	Mar-17	Apr-17	May-17	Jun-17	Jul-17	Aug-17	Sep-17	Oct-17	Nov-17	Dec-17	Jan-18
\$350,000 and Below	36	36	36	35	36	36	34	32	31	29	33	32	24	27	30	31	30	36	38	38	35	35	32	36
\$350,001 - \$475,000	20	20	20	20	19	20	19	17	21	20	19	20	22	22	22	22	24	25	26	26	24	24	24	28
\$475,001 - \$550,000	15	16	14	15	15	15	15	16	16	16	16	16	16	15	16	15	15	15	15	14	14	14	14	14
\$550,001 - \$650,000	16	15	14	13	13	13	13	13	13	14	14	13	13	13	13	13	13	13	13	13	13	13	12	12
\$650,001 - \$800,000	21	20	19	20	19	19	19	18	17	17	17	17	16	16	16	15	16	17	17	16	16	16	16	16
\$800,001 - \$1.1M	22	23	23	23	22	23	22	21	21	20	19	18	19	18	18	18	18	17	17	17	17	16	16	17
\$1.1M - \$1.9M	30	29	29	31	29	30	30	30	30	29	30	31	32	32	32	30	29	27	29	30	29	29	28	31
\$1.9M and Above	59	61	56	61	65	63	58	62	67	76	74	78	76	73	73	71	72	74	71	63	66	62	63	60
All Single Family Homes	20	20	19	19	19	19	19	18	18	18	18	18	18	18	18	18	17	18	18	18	17	17	17	17

SOURCE: Honolulu Board of REALTORS®, compiled from MLS data.

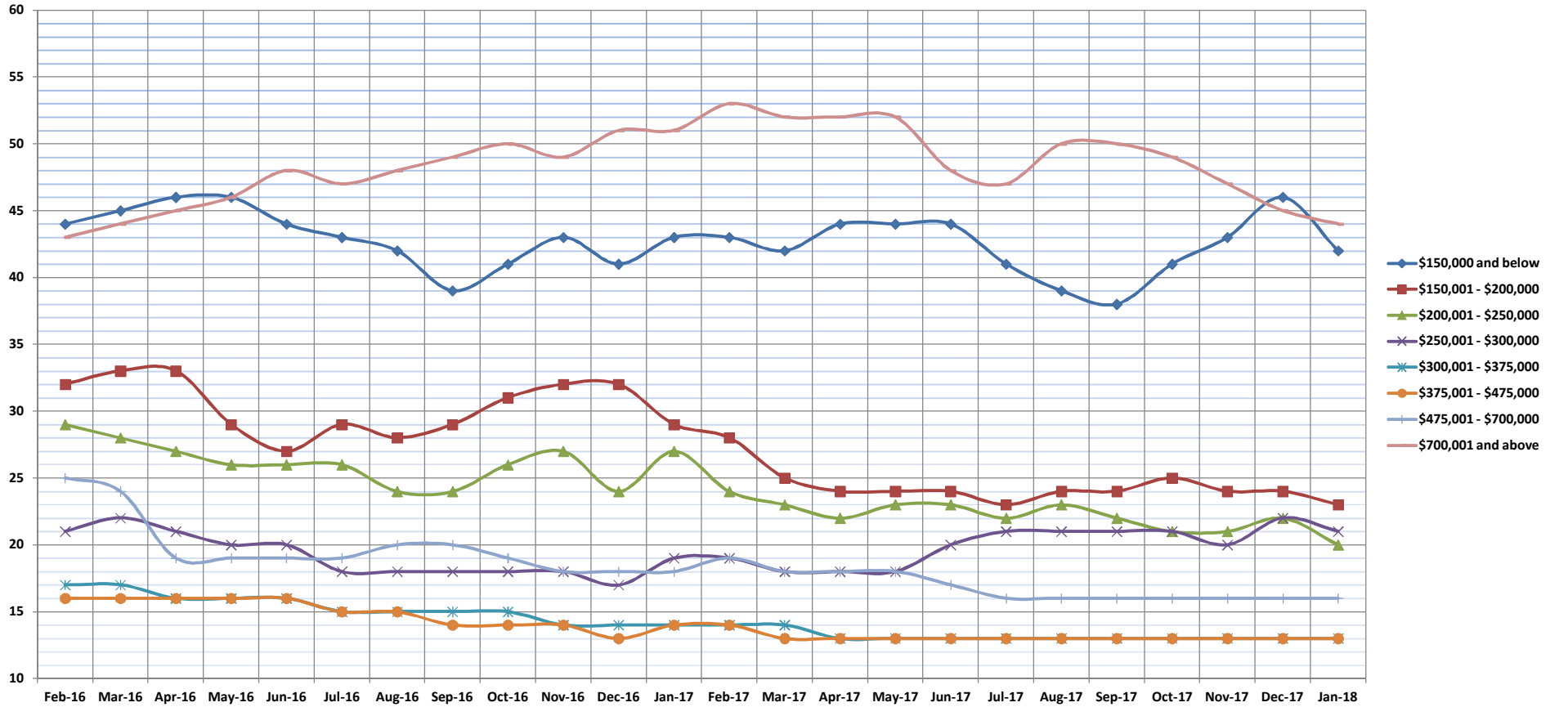


Days on Market Until Sale

Jan-18

Condos: Monthly, by Price Range

(The median number of days between when a property is first listed and when an offer is accepted. Based on a 12 month rolling median.)



	Feb-16	Mar-16	Apr-16	May-16	Jun-16	Jul-16	Aug-16	Sep-16	Oct-16	Nov-16	Dec-16	Jan-17	Feb-17	Mar-17	Apr-17	May-17	Jun-17	Jul-17	Aug-17	Sep-17	Oct-17	Nov-17	Dec-17	Jan-18
\$150,000 and below	44	45	46	46	44	43	42	39	41	43	41	43	43	42	44	44	44	41	39	38	41	43	46	42
\$150,001 - \$200,000	32	33	33	29	27	29	28	29	31	32	32	29	28	25	24	24	24	23	24	24	25	24	24	23
\$200,001 - \$250,000	29	28	27	26	26	26	24	24	26	27	24	27	24	23	22	23	23	22	23	22	21	21	21	20
\$250,001 - \$300,000	21	22	21	20	20	18	18	18	18	18	17	19	19	18	18	18	20	21	21	21	21	21	20	21
\$300,001 - \$375,000	17	17	16	16	16	15	15	15	15	14	14	14	14	14	13	13	13	13	13	13	13	13	13	13
\$375,001 - \$475,000	16	16	16	16	16	15	15	14	14	14	13	14	14	13	13	13	13	13	13	13	13	13	13	13
\$475,001 - \$700,000	25	24	19	19	19	19	20	20	19	18	18	18	19	18	18	18	17	16	16	16	16	16	16	16
\$700,001 and above	43	44	45	46	48	47	48	49	50	49	51	51	53	52	52	52	48	47	50	50	49	47	45	44
All Condos	22	21	21	21	21	20	20	20	20	20	19	20	20	19	19	19	18	18	18	18	18	18	18	17

SOURCE: Honolulu Board of REALTORS®, compiled from MLS data.

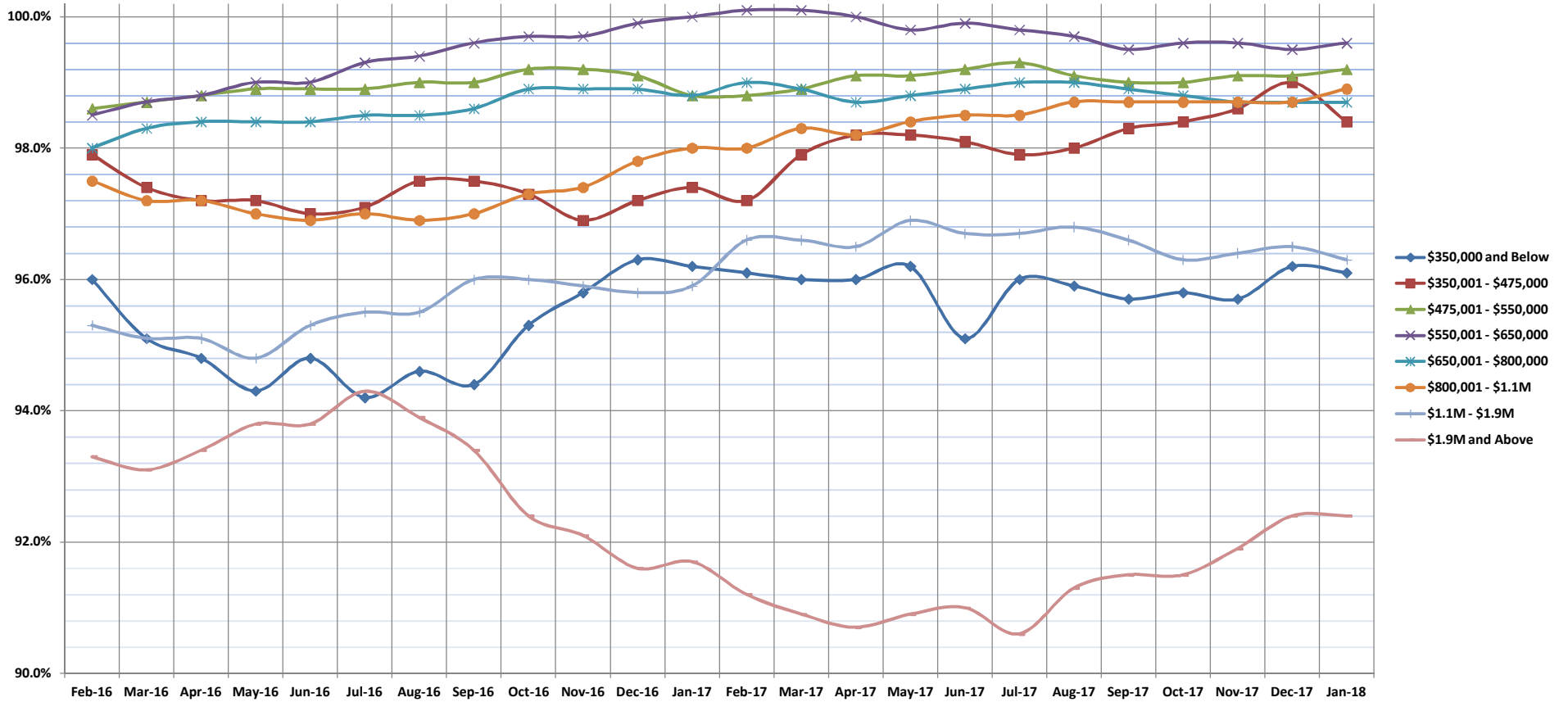


Percentage of Original Price Received

Jan-18

Single Family Homes: Monthly, by Price Range

(The average percentage found when dividing a property's sales price by the original list price. Based on a rolling 12 month average.)



	Feb-16	Mar-16	Apr-16	May-16	Jun-16	Jul-16	Aug-16	Sep-16	Oct-16	Nov-16	Dec-16	Jan-17	Feb-17	Mar-17	Apr-17	May-17	Jun-17	Jul-17	Aug-17	Sep-17	Oct-17	Nov-17	Dec-17	Jan-18
\$350,000 and Below	96.0%	95.1%	94.8%	94.3%	94.8%	94.2%	94.6%	94.4%	95.3%	95.8%	96.3%	96.2%	96.1%	96.0%	96.0%	96.2%	95.1%	96.0%	95.9%	95.7%	95.8%	95.7%	96.2%	96.1%
\$350,001 - \$475,000	97.9%	97.4%	97.2%	97.2%	97.0%	97.1%	97.5%	97.5%	97.3%	96.9%	97.2%	97.4%	97.2%	97.9%	98.2%	98.2%	98.1%	97.9%	98.0%	98.3%	98.4%	98.6%	99.0%	98.4%
\$475,001 - \$550,000	98.6%	98.7%	98.8%	98.9%	98.9%	98.9%	99.0%	99.0%	99.2%	99.2%	99.1%	98.8%	98.8%	98.9%	99.1%	99.1%	99.2%	99.3%	99.1%	99.0%	99.0%	99.1%	99.1%	99.2%
\$550,001 - \$650,000	98.5%	98.7%	98.8%	99.0%	99.0%	99.3%	99.4%	99.6%	99.7%	99.9%	100.0%	100.1%	100.1%	100.0%	99.8%	99.8%	99.9%	99.8%	99.7%	99.5%	99.6%	99.6%	99.6%	99.6%
\$650,001 - \$800,000	98.0%	98.3%	98.4%	98.4%	98.4%	98.5%	98.5%	98.6%	98.9%	98.9%	98.9%	98.8%	99.0%	98.9%	98.7%	98.8%	98.8%	98.9%	99.0%	99.0%	98.9%	98.8%	98.7%	98.7%
\$800,001 - \$1.1M	97.5%	97.2%	97.2%	97.0%	96.9%	97.0%	96.9%	97.0%	97.3%	97.4%	97.8%	98.0%	98.0%	98.3%	98.2%	98.4%	98.5%	98.5%	98.7%	98.7%	98.7%	98.7%	98.7%	98.7%
\$1.1M - \$1.9M	95.3%	95.1%	95.1%	94.8%	95.3%	95.5%	95.5%	96.0%	96.0%	95.9%	95.8%	95.9%	96.6%	96.6%	96.5%	96.9%	96.7%	96.7%	96.8%	96.6%	96.3%	96.4%	96.5%	96.3%
\$1.9M and Above	93.3%	93.1%	93.4%	93.8%	93.8%	94.3%	93.9%	93.4%	92.4%	92.1%	91.6%	91.7%	91.2%	90.9%	90.7%	90.9%	91.0%	90.6%	91.3%	91.5%	91.5%	91.9%	92.4%	92.4%
All Single Family Homes	98.3%	98.5%	98.6%	98.7%	98.6%	98.8%	98.8%	98.9%	99.1%	99.1%	99.1%	99.1%	99.0%	98.9%	98.7%	98.8%	98.9%	98.7%	98.6%	98.5%	98.4%	98.3%	98.2%	98.2%

SOURCE: Honolulu Board of REALTORS®, compiled from MLS data.

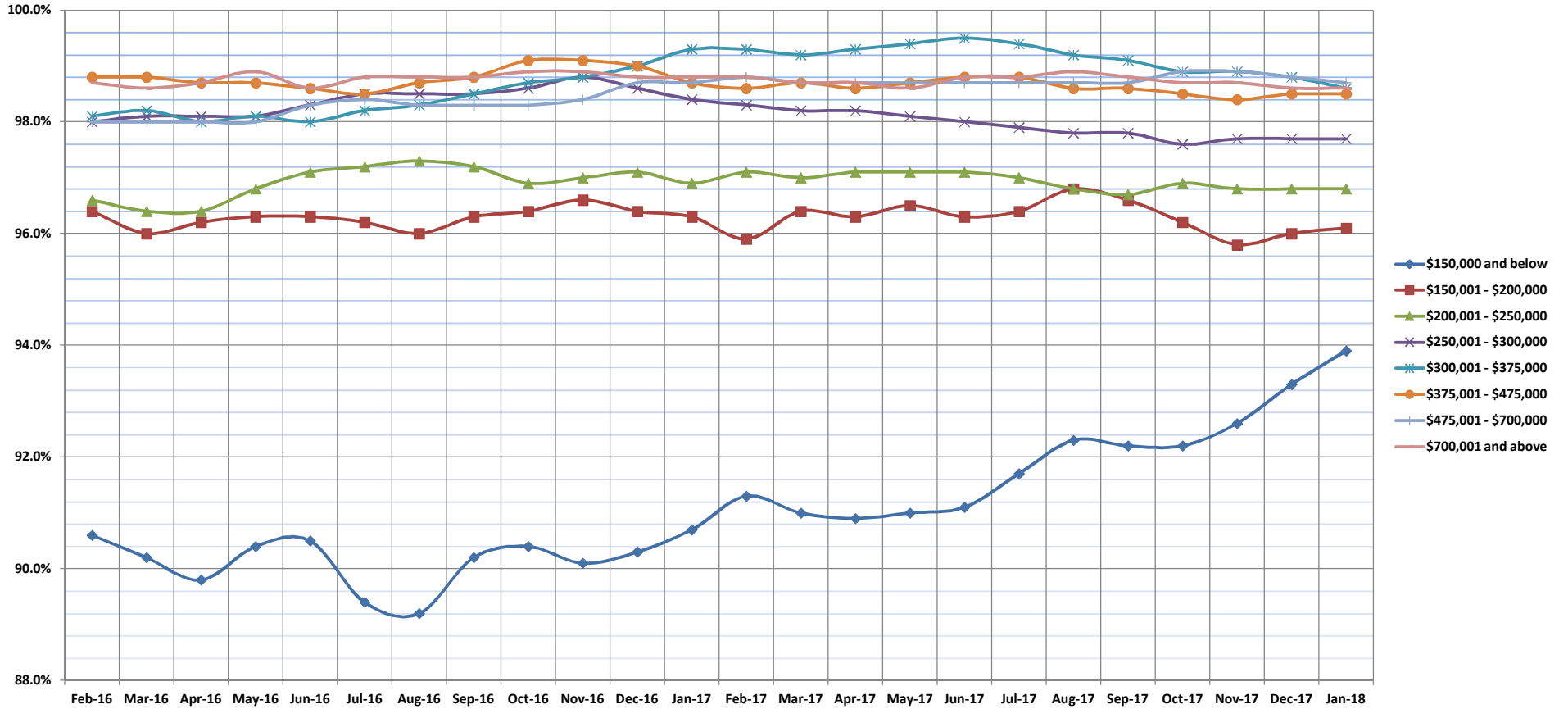


Percentage of Original Price Received

Jan-18

Condos: Monthly, by Price Range

(The average percentage found when dividing a property's sales price by the original list price. Based on a rolling 12 month average.)



	Feb-16	Mar-16	Apr-16	May-16	Jun-16	Jul-16	Aug-16	Sep-16	Oct-16	Nov-16	Dec-16	Jan-17	Feb-17	Mar-17	Apr-17	May-17	Jun-17	Jul-17	Aug-17	Sep-17	Oct-17	Nov-17	Dec-17	Jan-18
\$150,000 and below	90.6%	90.2%	89.8%	90.4%	90.5%	89.4%	89.2%	90.2%	90.4%	90.1%	90.3%	90.7%	91.3%	91.0%	90.9%	91.0%	91.1%	91.7%	92.3%	92.2%	92.2%	92.6%	93.3%	93.9%
\$150,001 - \$200,000	96.4%	96.0%	96.2%	96.3%	96.3%	96.2%	96.0%	96.3%	96.4%	96.6%	96.4%	96.3%	95.9%	96.4%	96.3%	96.5%	96.3%	96.4%	96.8%	96.6%	96.2%	95.8%	96.0%	96.1%
\$200,001 - \$250,000	96.6%	96.4%	96.4%	96.8%	97.1%	97.2%	97.3%	97.2%	96.9%	97.0%	97.1%	96.9%	97.1%	97.0%	97.1%	97.1%	97.1%	97.0%	96.8%	96.7%	96.6%	96.8%	96.8%	96.8%
\$250,001 - \$300,000	98.0%	98.1%	98.1%	98.1%	98.3%	98.5%	98.5%	98.6%	98.7%	98.8%	98.6%	98.4%	98.3%	98.2%	98.2%	98.1%	98.0%	97.9%	97.8%	97.8%	97.6%	97.7%	97.7%	97.7%
\$300,001 - \$375,000	98.1%	98.2%	98.1%	98.1%	98.0%	98.2%	98.3%	98.5%	98.7%	98.8%	99.0%	98.8%	99.3%	99.3%	99.2%	99.3%	99.4%	99.5%	99.4%	99.2%	99.1%	98.9%	98.9%	98.6%
\$375,001 - \$475,000	98.8%	98.8%	98.7%	98.7%	98.6%	98.5%	98.7%	98.8%	99.1%	99.1%	99.0%	98.7%	98.6%	98.7%	98.6%	98.7%	98.6%	98.7%	98.8%	98.8%	98.6%	98.6%	98.5%	98.5%
\$475,001 - \$700,000	98.0%	98.0%	98.0%	98.0%	98.3%	98.4%	98.3%	98.3%	98.3%	98.4%	98.7%	98.7%	98.8%	98.7%	98.7%	98.7%	98.7%	98.7%	98.7%	98.7%	98.7%	98.7%	98.7%	98.7%
\$700,001 and above	96.0%	95.2%	95.1%	95.3%	95.1%	94.9%	94.9%	94.9%	94.8%	94.5%	94.0%	94.4%	94.6%	95.5%	95.7%	95.4%	95.7%	95.8%	95.8%	95.8%	95.7%	95.8%	96.1%	96.6%
All Condos	98.7%	98.6%	98.7%	98.9%	98.6%	98.8%	98.8%	98.8%	98.8%	98.9%	98.8%	98.8%	98.8%	98.8%	98.7%	98.7%	98.6%	98.8%	98.8%	98.8%	98.9%	98.8%	98.7%	98.6%

SOURCE: Honolulu Board of REALTORS®, compiled from MLS data.

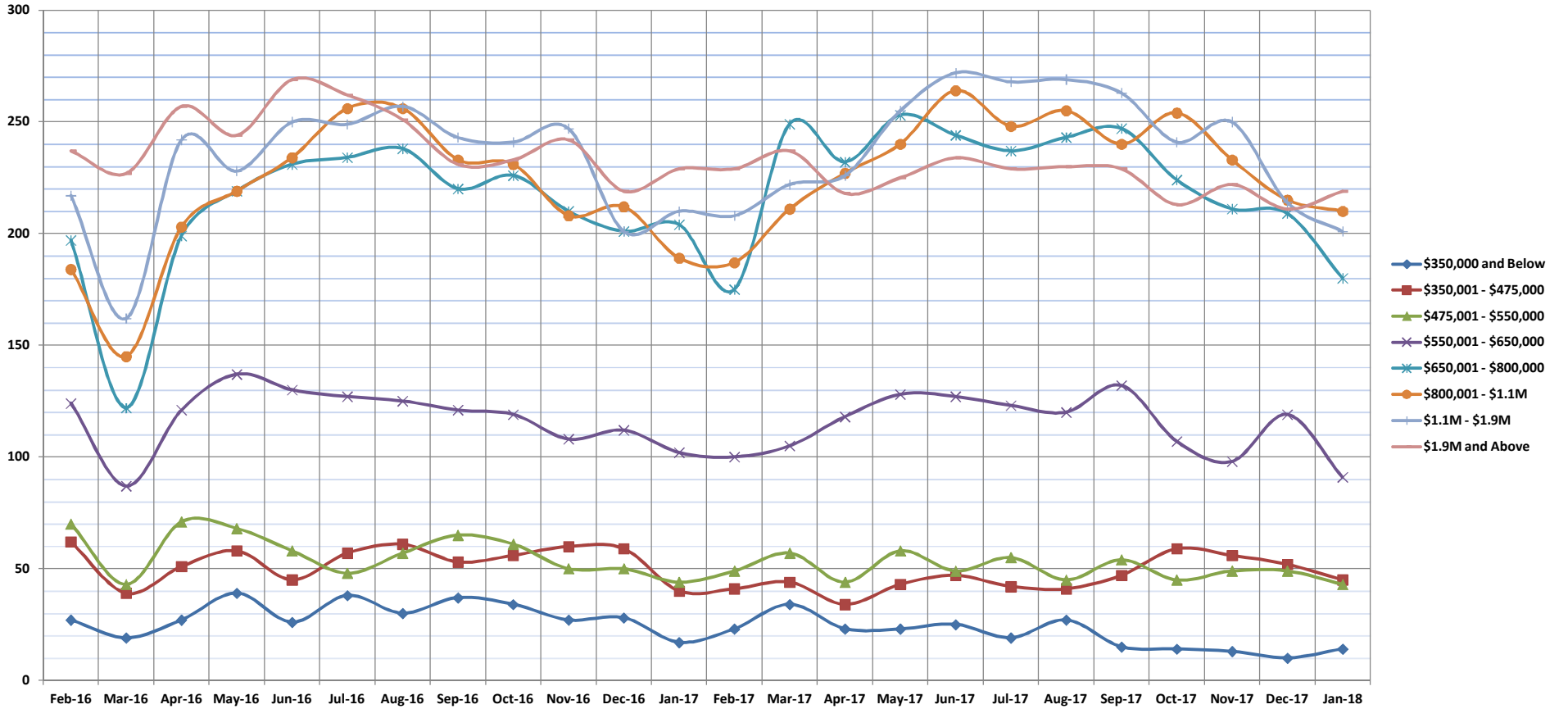


Inventory of Homes for Sale

Jan-18

Single Family Homes: Monthly, by Price Range

(The number of properties available for sale in active status at the end of a given month.)



	Feb-16	Mar-16	Apr-16	May-16	Jun-16	Jul-16	Aug-16	Sep-16	Oct-16	Nov-16	Dec-16	Jan-17	Feb-17	Mar-17	Apr-17	May-17	Jun-17	Jul-17	Aug-17	Sep-17	Oct-17	Nov-17	Dec-17	Jan-18
\$350,000 and Below	27	19	27	39	26	38	30	37	34	27	28	17	23	34	23	23	25	19	27	15	14	13	10	14
\$350,001 - \$475,000	62	39	51	58	45	57	61	53	56	60	59	40	41	44	34	43	47	42	41	47	59	56	52	45
\$475,001 - \$550,000	70	43	71	68	58	48	57	65	61	50	50	44	49	57	44	58	49	55	45	54	45	49	49	43
\$550,001 - \$650,000	124	87	121	137	130	127	125	121	119	108	112	102	100	105	118	128	127	123	120	132	107	98	119	91
\$650,001 - \$800,000	197	122	199	219	231	234	238	220	226	210	201	204	175	249	232	253	244	237	243	247	224	211	209	180
\$800,001 - \$1.1M	184	145	203	219	234	256	256	233	231	208	212	189	187	211	227	240	264	248	255	240	254	233	215	210
\$1.1M - \$1.9M	217	162	242	228	250	249	257	243	241	247	201	210	208	222	226	255	272	268	269	263	241	250	214	201
\$1.9M and Above	237	227	257	244	269	262	251	231	233	242	219	229	229	237	218	225	234	229	230	229	213	222	211	219
All Single Family Homes	1118	844	1171	1212	1243	1271	1275	1203	1201	1152	1082	1035	1012	1159	1112	1225	1262	1221	1230	1227	1157	1132	1079	1003

SOURCE: Honolulu Board of REALTORS®, compiled from MLS data.

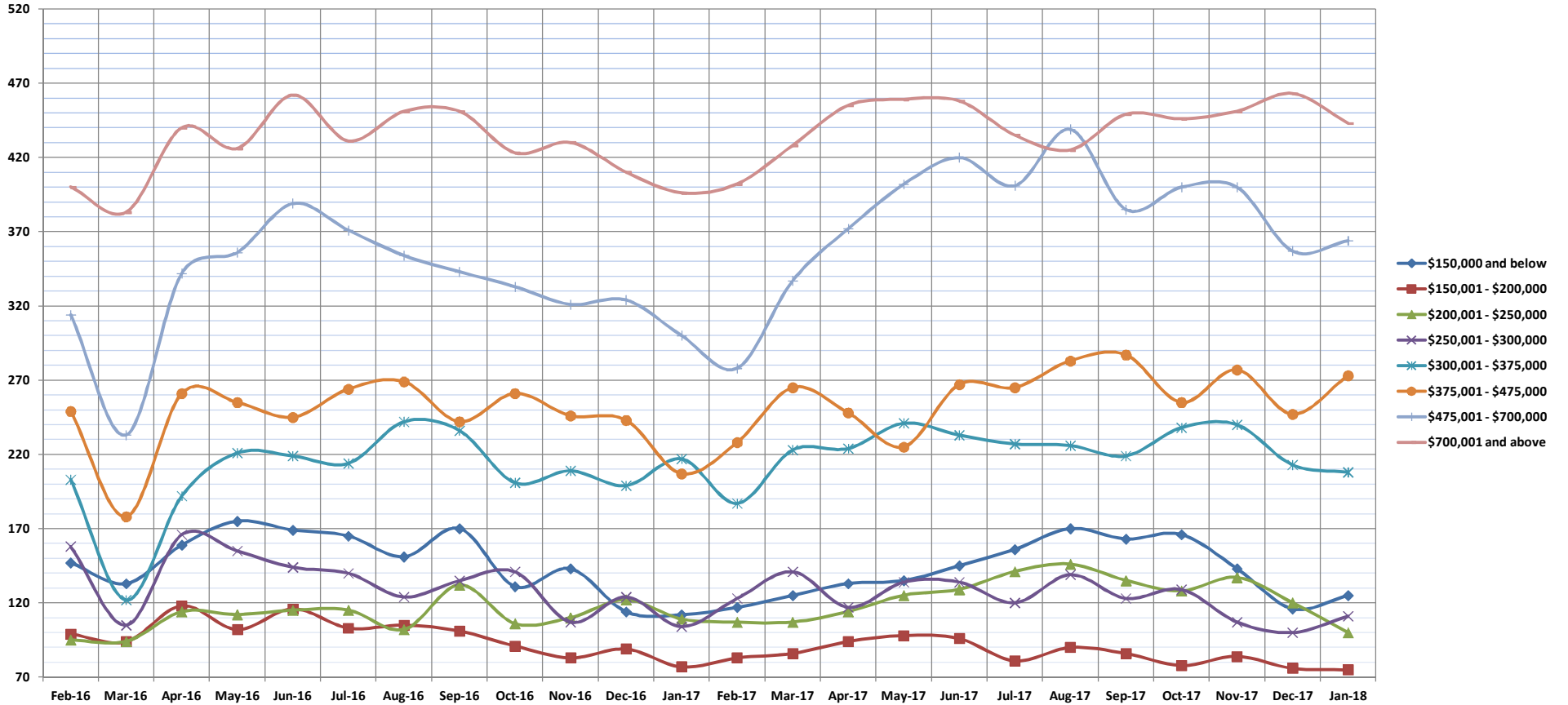


Inventory of Homes for Sale

Jan-18

Condos: Monthly, by Price Range

(The number of properties available for sale in active status at the end of a given month.)



	Feb-16	Mar-16	Apr-16	May-16	Jun-16	Jul-16	Aug-16	Sep-16	Oct-16	Nov-16	Dec-16	Jan-17	Feb-17	Mar-17	Apr-17	May-17	Jun-17	Jul-17	Aug-17	Sep-17	Oct-17	Nov-17	Dec-17	Jan-18
\$150,000 and below	147	133	159	175	169	165	151	170	131	143	114	112	117	125	133	135	145	156	170	163	166	143	116	125
\$150,001 - \$200,000	99	94	118	102	116	103	105	101	91	83	89	77	83	86	94	98	96	81	90	86	78	84	76	75
\$200,001 - \$250,000	95	94	114	112	115	115	102	132	106	110	122	109	107	107	114	125	129	141	146	135	128	137	120	100
\$250,001 - \$300,000	158	105	166	155	144	140	124	135	141	107	124	104	123	141	117	134	134	120	139	123	129	107	100	111
\$300,001 - \$375,000	203	122	192	221	219	214	242	236	201	209	199	217	187	223	224	241	233	227	226	219	238	240	213	208
\$375,001 - \$475,000	249	178	261	255	245	264	269	242	261	246	243	207	228	265	248	225	267	265	283	287	255	277	247	273
\$475,001 - \$700,000	314	233	342	356	389	371	354	343	333	321	324	300	278	337	372	402	420	401	439	385	400	400	357	364
\$700,001 and above	400	383	440	426	462	431	451	451	423	430	410	396	402	428	455	459	458	435	425	449	446	451	463	443
All Condos	1665	1342	1792	1802	1859	1803	1798	1810	1687	1649	1625	1522	1525	1712	1757	1849	1882	1826	1918	1847	1840	1839	1692	1699

SOURCE: Honolulu Board of REALTORS®, compiled from MLS data.

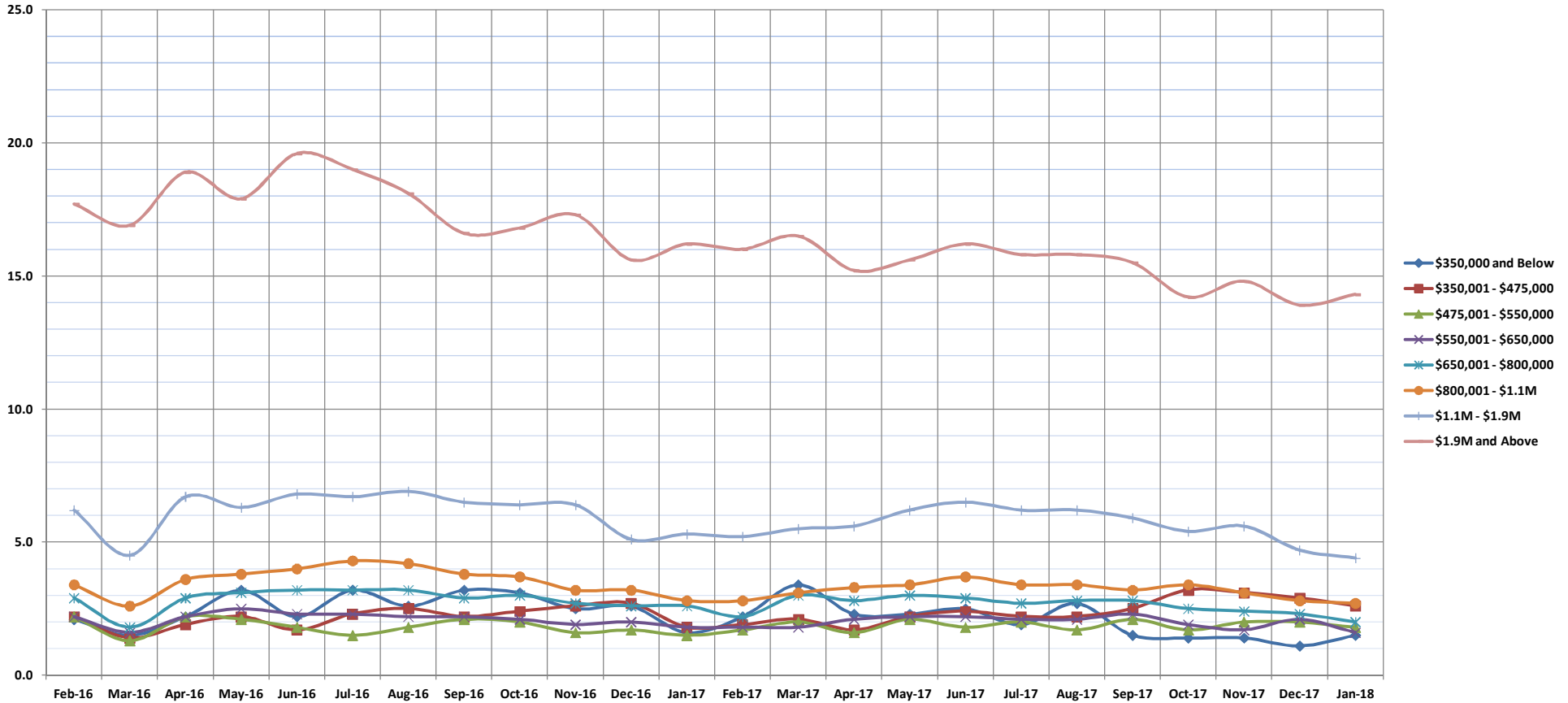


Months Supply of Inventory

Jan-18

Single Family Homes: Monthly, by Price Range

(Compares the number of active listings available to the average monthly pending sales from the last 12 months.)



	Feb-16	Mar-16	Apr-16	May-16	Jun-16	Jul-16	Aug-16	Sep-16	Oct-16	Nov-16	Dec-16	Jan-17	Feb-17	Mar-17	Apr-17	May-17	Jun-17	Jul-17	Aug-17	Sep-17	Oct-17	Nov-17	Dec-17	Jan-18
\$350,000 and Below	2.1	1.5	2.2	3.2	2.2	3.2	2.6	3.2	3.1	2.5	2.6	1.6	2.2	3.4	2.3	2.3	2.5	1.9	2.7	1.5	1.4	1.4	1.1	1.5
\$350,001 - \$475,000	2.2	1.4	1.9	2.2	1.7	2.3	2.5	2.2	2.4	2.6	2.7	1.8	1.9	2.1	1.7	2.2	2.4	2.2	2.2	2.5	3.2	3.1	2.9	2.6
\$475,001 - \$550,000	2.2	1.3	2.2	2.1	1.8	1.5	1.8	2.1	2.0	1.6	1.7	1.5	1.7	2.0	1.6	2.1	1.8	2.0	1.7	2.1	1.7	2.0	2.0	1.8
\$550,001 - \$650,000	2.2	1.6	2.2	2.5	2.3	2.3	2.2	2.2	2.1	1.9	2.0	1.8	1.8	1.8	2.1	2.2	2.2	2.1	2.1	2.3	1.9	1.7	2.1	1.6
\$650,001 - \$800,000	2.9	1.8	2.9	3.1	3.2	3.2	3.2	2.9	3.0	2.7	2.6	2.6	2.2	3.0	2.8	3.0	2.9	2.7	2.8	2.8	2.5	2.4	2.3	2.0
\$800,001 - \$1.1M	3.4	2.6	3.6	3.8	4.0	4.3	4.2	3.8	3.7	3.2	3.2	2.8	2.8	3.1	3.3	3.4	3.7	3.4	3.4	3.2	3.4	3.1	2.8	2.7
\$1.1M - \$1.9M	6.2	4.5	6.7	6.3	6.8	6.7	6.9	6.5	6.4	6.4	5.1	5.3	5.2	5.5	5.6	6.2	6.5	6.2	6.2	5.9	5.4	5.6	4.7	4.4
\$1.9M and Above	17.7	16.9	18.9	17.9	19.6	19.0	18.1	16.6	16.8	17.3	15.6	16.2	16.0	16.5	15.2	15.6	16.2	15.8	15.8	15.5	14.2	14.8	13.9	14.3
All Single Family Homes	3.7	2.8	3.9	4.0	4.0	4.1	4.1	3.9	3.9	3.6	3.4	3.3	3.2	3.6	3.5	3.8	3.9	3.7	3.7	3.7	3.4	3.4	3.2	3.0

SOURCE: Honolulu Board of REALTORS®, compiled from MLS data.

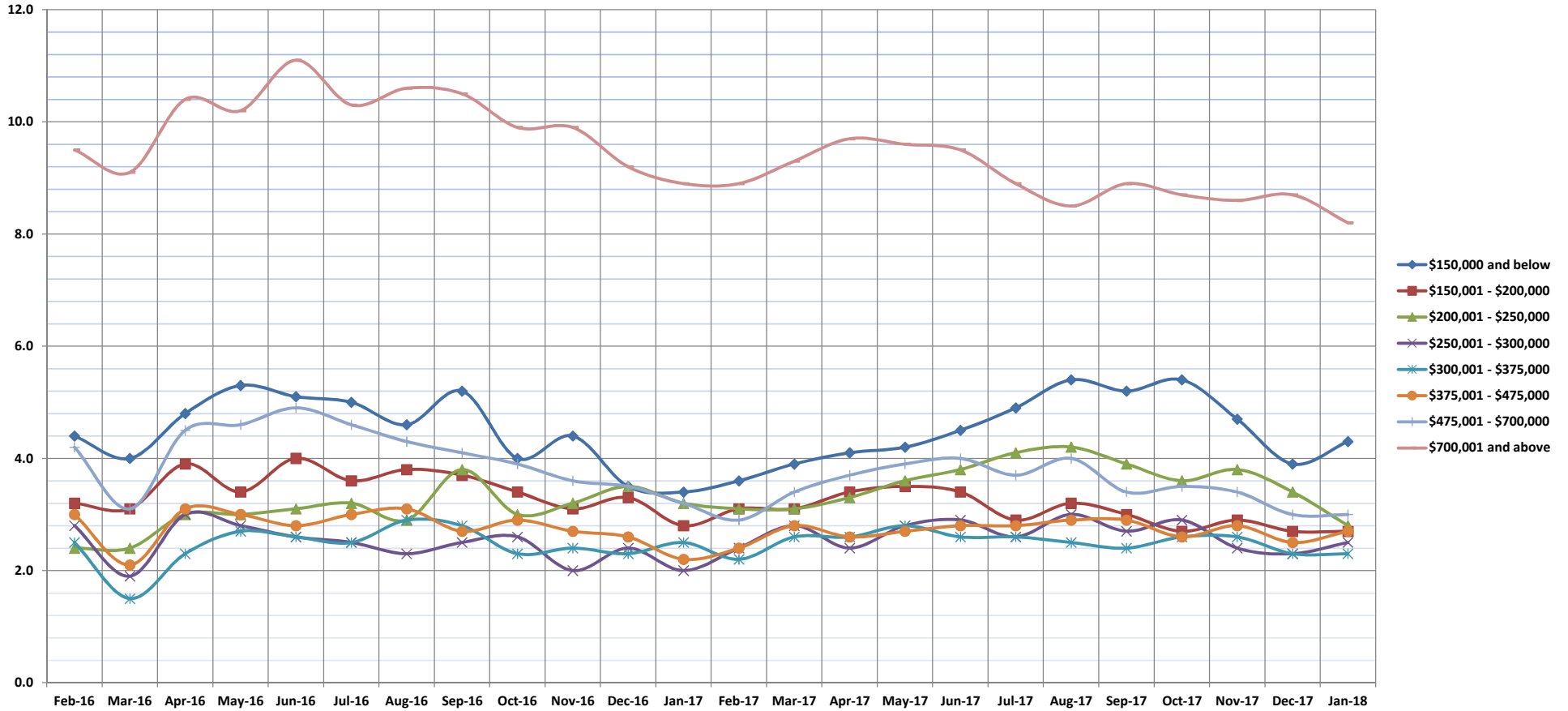


Months Supply of Inventory

Jan-18

Condos: Monthly, by Price Range

(Compares the number of active listings available to the average monthly pending sales from the last 12 months.)



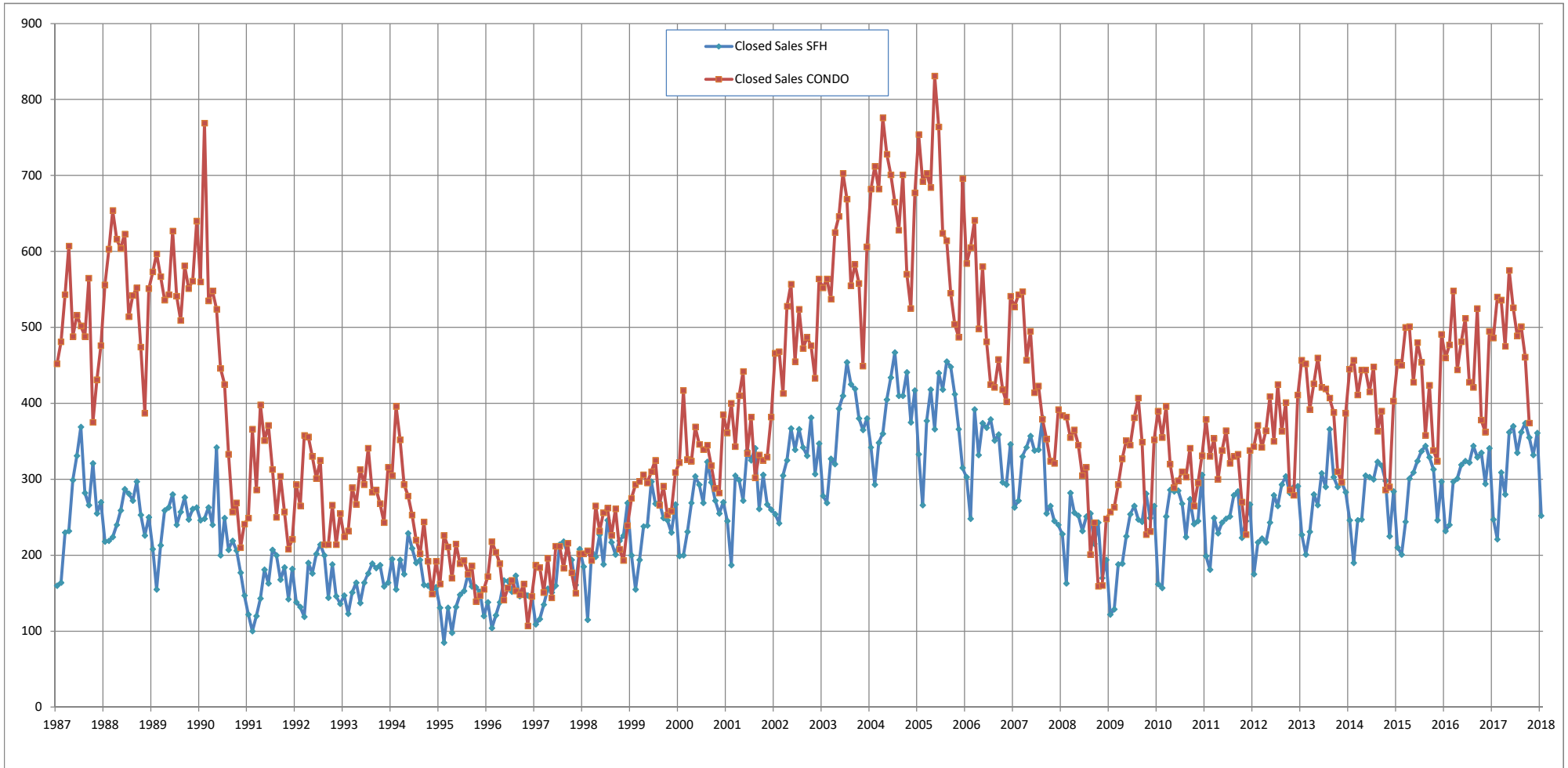
	Feb-16	Mar-16	Apr-16	May-16	Jun-16	Jul-16	Aug-16	Sep-16	Oct-16	Nov-16	Dec-16	Jan-17	Feb-17	Mar-17	Apr-17	May-17	Jun-17	Jul-17	Aug-17	Sep-17	Oct-17	Nov-17	Dec-17	Jan-18
\$150,000 and below	4.4	4.0	4.8	5.3	5.1	5.0	4.6	5.2	4.0	4.4	3.5	3.4	3.6	3.9	4.1	4.2	4.5	4.9	5.4	5.2	5.4	4.7	3.9	4.3
\$150,001 - \$200,000	3.2	3.1	3.9	3.4	4.0	3.6	3.8	3.7	3.4	3.1	3.3	2.8	3.1	3.1	3.4	3.5	3.4	2.9	3.2	3.0	2.7	2.9	2.7	2.7
\$200,001 - \$250,000	2.4	2.4	3.0	3.0	3.1	3.2	2.9	3.8	3.0	3.2	3.5	3.2	3.1	3.1	3.3	3.6	3.8	4.1	4.2	3.9	3.6	3.8	3.4	2.8
\$250,001 - \$300,000	2.8	1.9	3.0	2.8	2.6	2.5	2.3	2.5	2.6	2.0	2.4	2.0	2.4	2.8	2.4	2.8	2.9	2.6	3.0	2.7	2.9	2.4	2.3	2.5
\$300,001 - \$375,000	2.5	1.5	2.3	2.7	2.6	2.5	2.9	2.8	2.3	2.4	2.3	2.5	2.2	2.6	2.6	2.8	2.6	2.6	2.5	2.4	2.6	2.6	2.3	2.3
\$375,001 - \$475,000	3.0	2.1	3.1	3.0	2.8	3.0	3.1	2.7	2.9	2.7	2.6	2.2	2.4	2.8	2.6	2.7	2.8	2.8	2.9	2.9	2.6	2.8	2.5	2.7
\$475,001 - \$700,000	4.2	3.1	4.5	4.6	4.9	4.6	4.3	4.1	3.9	3.6	3.5	3.2	2.9	3.4	3.7	3.9	4.0	3.7	4.0	3.4	3.5	3.4	3.0	3.0
\$700,001 and above	9.5	9.1	10.4	10.2	11.1	10.3	10.6	10.5	9.9	9.9	9.2	8.9	8.9	9.3	9.7	9.6	9.5	8.9	8.5	8.9	8.7	8.6	8.7	8.2
All Condos	3.8	3.0	4.0	4.1	4.2	4.0	4.0	4.0	3.7	3.6	3.5	3.3	3.3	3.7	3.7	3.9	3.9	3.8	3.9	3.8	3.7	3.7	3.4	3.4

SOURCE: Honolulu Board of REALTORS®, compiled from MLS data.

Closed Sales

Single Family Homes and Condos

OAHU, HAWAII: Jan 1987 to the Present

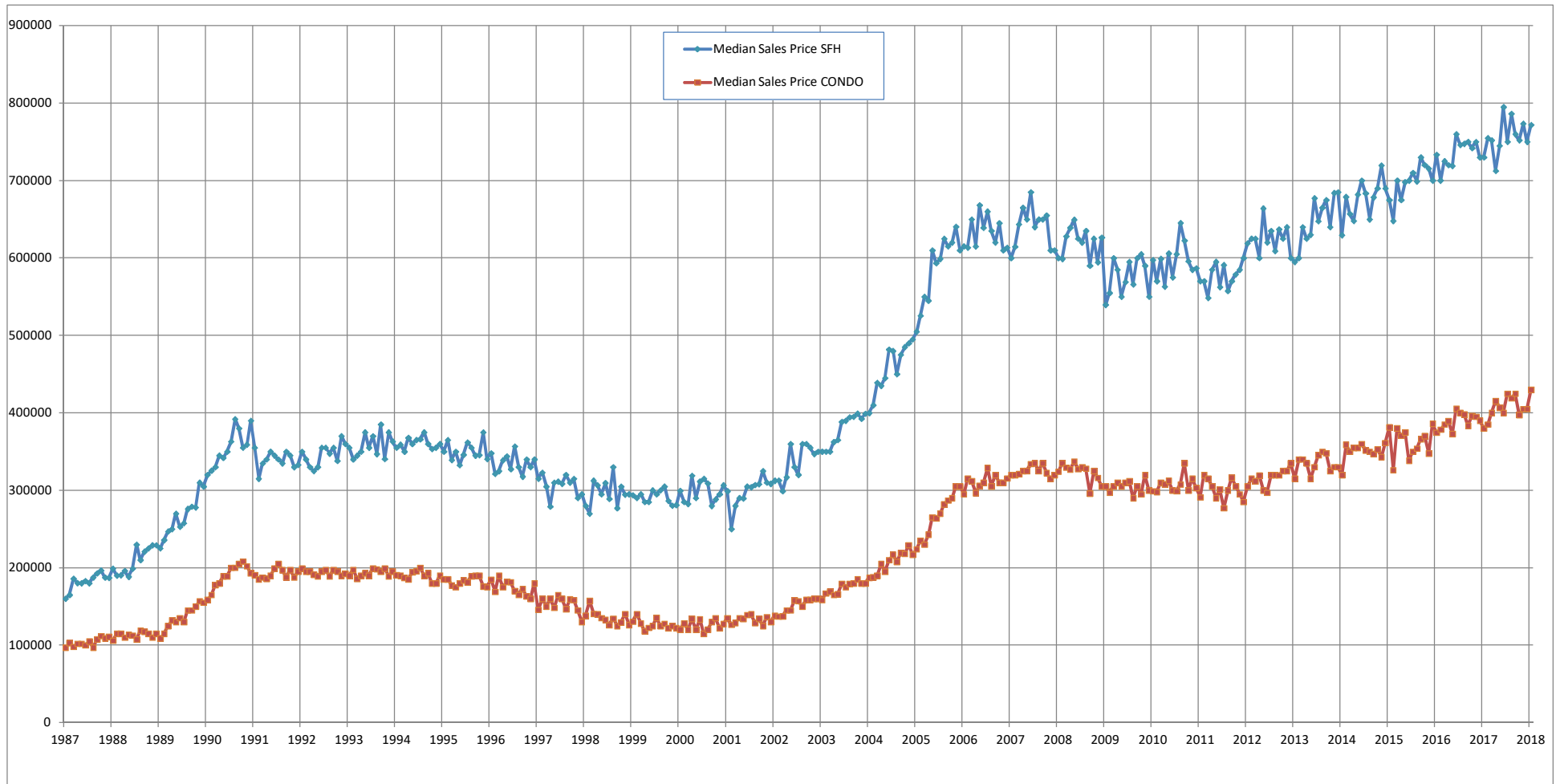


SOURCE: Honolulu Board of REALTORS® , compiled from MLS data.

Median Sales Price

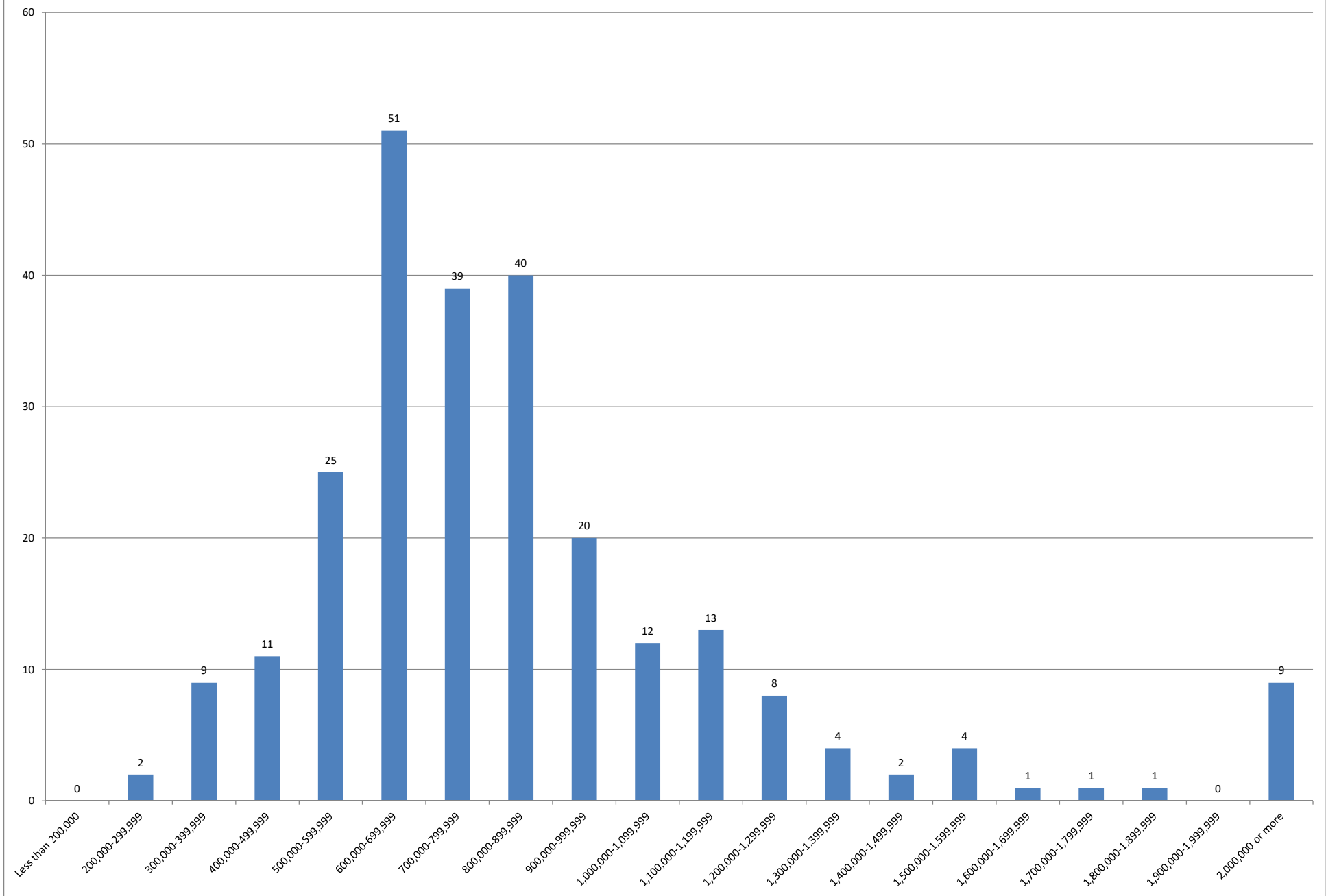
Single Family Homes and Condos

OAHU, HAWAII: Jan 1987 to the Present



SOURCE: Honolulu Board of REALTORS®, compiled from MLS data.

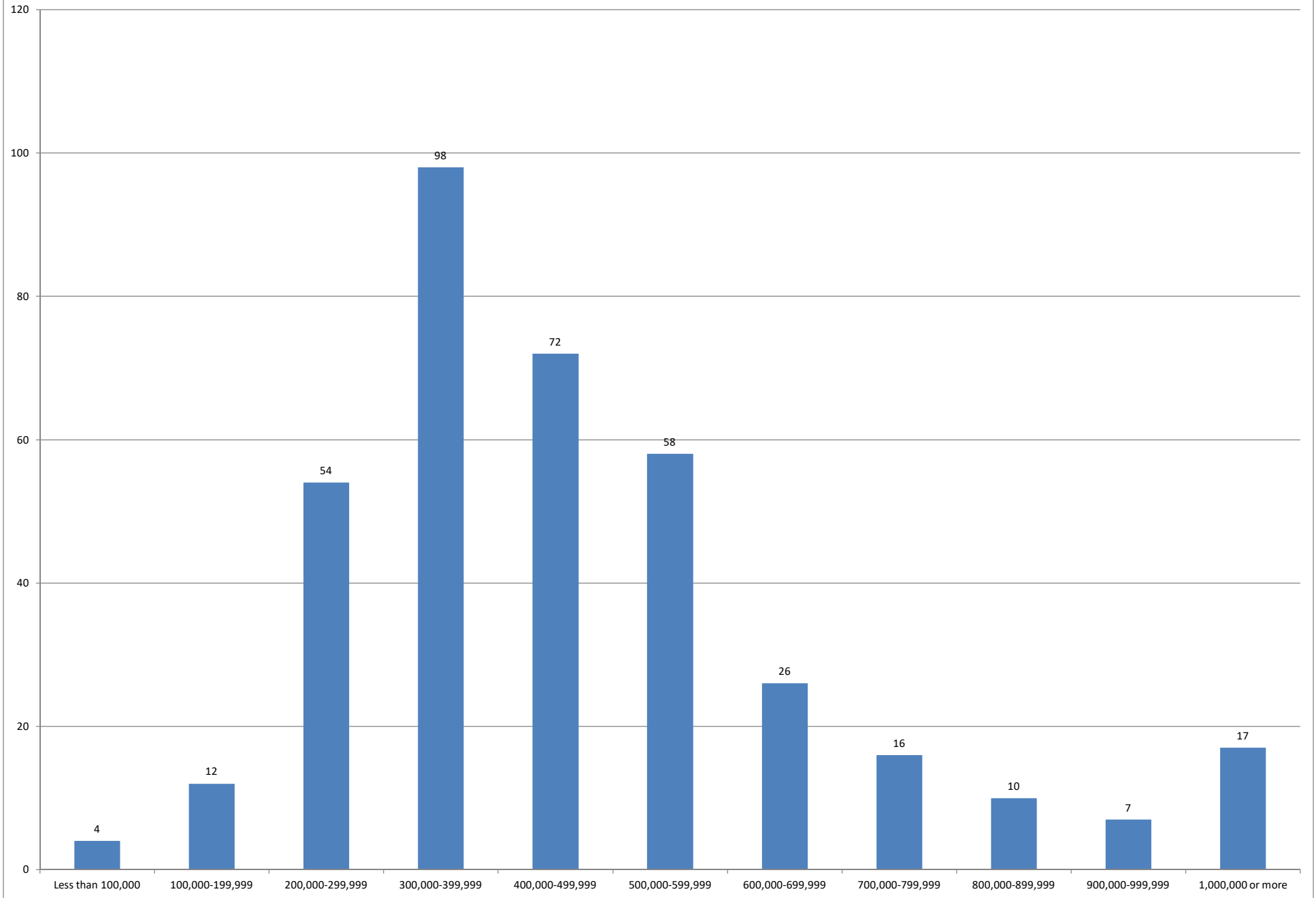
January 2018 Single Family Homes Sold



SOURCE: Honolulu Board of REALTORS®, compiled from MLS data.



January 2018 Condos Sold



SOURCE: Honolulu Board of REALTORS®, compiled from MLS data.

